



**FREMANTLE PRISON, WESTERN AUSTRALIA  
ARCHAEOLOGICAL TEST EXCAVATIONS  
OF THE STABLES BUILDING  
(Stage 2)**

---

for

Philip Griffiths Architects and Building Management and Works

June 2010

Sean Winter - Jim Stedman - Kate Morse



**THE UNIVERSITY OF  
WESTERN AUSTRALIA**  
*Achieving International Excellence*

***Dr Kate Morse***

***Director***

Archaeology M405  
University of Western Australia  
35 Stirling HWY  
Crawley WA 6009  
p: +61 (08) 6488 2860  
f: +61 (08) 6488 1023:  
e: eureka@uwa.edu.au

***Copyright***

This report and the information it contains is subject to copyright and may not be copied in whole or part without written consent of Eureka Archaeological Research and Consulting UWA.

***Disclaimer***

Eureka archaeological research and consulting is not responsible for omissions and inconsistencies that may result from information not available at the time this report was prepared.

## TABLE OF CONTENTS

INTRODUCTION.....	4
BACKGROUND .....	4
PROJECT AIMS.....	6
<i>Southern Exterior Wall of the Stables</i> .....	6
<i>Stables Doorway</i> .....	8
EXCAVATION TEAM .....	9
EXCAVATION METHODS.....	9
<i>Southern Exterior Wall of the Stables</i> .....	9
<i>Stables Doorway</i> .....	11
RESULTS.....	12
SOUTHERN EXTERIOR WALL OF THE STABLES.....	12
<i>Stratigraphy</i> .....	12
<i>The Deposit</i> .....	14
<i>Structural Remains</i> .....	14
<i>Artefacts</i> .....	15
<i>Dating of Excavated Artefacts</i> .....	19
<i>Cannonballs</i> .....	19
STABLE DOORWAY.....	21
<i>Stratigraphy</i> .....	21
CONCLUSIONS AND INTERPRETATION.....	23
RECOMMENDATIONS.....	24
REFERENCES .....	25
APPENDIX 1 .....	26
FREMANTLE PRISON STABLES: ARTEFACT CATALOGUE.....	26

**LIST OF TABLES**

TABLE 1: EXCAVATED MATERIAL FROM TRENCH 1 - ARTEFACT FORM..... 18  
 TABLE 2: EXCAVATED MATERIAL FROM TRENCH 1 - ARTEFACT FUNCTION..... 18

**LIST OF PLATES**

PLATE 1: FREMANTLE PRISON STABLES BUILDING, VIEW SOUTH-EAST .....5  
 PLATE 2: SOUTHERN EXTERIOR WALL OF STABLES SHOWING TRENCH DUG BY BMW  
 AND EXTENT OF PROPOSED ARCHAEOLOGICAL INVESTIGATION (TRENCH 1) ..... 7  
 PLATE 3: HOLLOW, CAST IRON BALL FOUND BY WORKMEN ADJACENT TO STABLES  
 SOUTHERN EXTERIOR WALL (SCALE = 10CM)..... 7  
 PLATE 4: TRENCH 1 SHOWING STRUCTURAL ELEMENTS AND SOUTHERN EXTERIOR  
 STABLES WALL ..... 10  
 PLATE 5: TRENCH 2, STABLE DOORWAY SHOWING STRATIGRAPHIC UNITS 102 AND 104  
 ..... 11  
 PLATE 6: TOOTHBRUSH HANDLE WITH SCRATCHED INITIALS (SCALE = 10CM)..... 16  
 PLATE 7: TRANSFER PRINTED CERAMIC RIM SHERD (SCALE = 10CM)..... 16  
 PLATE 8: COMPLETE CLEAR GLASS BOTTLE (SCALE = 10CM)..... 17  
 PLATE 9: CASE SHOT (C. 1825) RECOVERED FROM TRENCH 1 ..... 20  
 PLATE 10: SIX POUNDER GUN OUTSIDE FREMANTLE PRISON ENTRANCE C.1860 ..... 20

**LIST OF FIGURES**

FIGURE 1: SKETCH PLAN OF FREMANTLE PRISON, STABLES BUILDING IS AT LOWER  
 RIGHT OF THE COMPLEX, SHADED IN (KERR 1992, REVISED 1998). .....5  
 FIGURE 2: PLAN OF THE STABLES BUILDING WITH THE LOCATIONS OF TRENCHES 1 AND  
 2..... 8  
 FIGURE 3: HARRIS MATRIX, TRENCH 1 FREMANTLE STABLES ..... 12  
 FIGURE 4: HARRIS MATRIX, TRENCH 2 FREMANTLE STABLES ..... 21

## INTRODUCTION

This report details the results of archaeological work undertaken in the Fremantle Prison Stables building in November 2009. Eureka Archaeological Research and Consulting UWA (Eureka) was engaged by Philip Griffiths Architects (PGA), on behalf of Building Management and Works (BMW), to undertake archaeological assessment of the Fremantle Prison Stables building prior to the commencement of maintenance and restoration works. In particular, archaeological assessment was undertaken to investigate two areas: one adjacent to the building's southern exterior wall, and another at the stable's existing western doorway.

## BACKGROUND

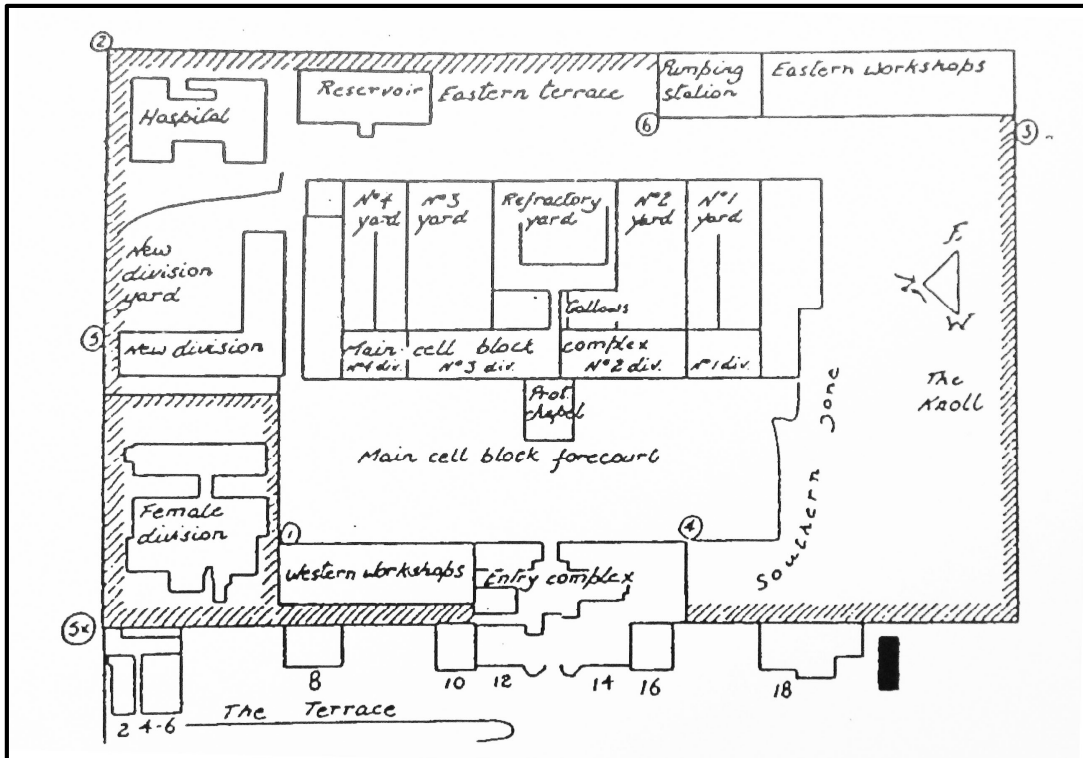
Fremantle Prison is located in the city of Fremantle, Western Australia. The prison operated as a jail from 1859 to 1991, but is now managed by the Department of Building Management and Works (BMW) as a heritage centre and multi-purpose venue. The prison grounds now house offices, museum collections, function venues, a visitors centre and café. The Prison is listed on local, state and federal heritage registers and is part of a consortium of convict-era heritage sites forming a national bid for World Heritage listing. Previous archaeological work undertaken by Eureka at Fremantle Prison includes watching briefs and assessments of features exposed during other development work (Fleming and Burke 2009), and archaeological assessment of the Prison parade ground and visitor centre's café in the context of proposed re-developments (Burke *et al.* 2009; Fleming *et al.* 2009). A detailed historical background to the Fremantle Prison complex is provided in Burke *et al.* 2009.

Fremantle Prison Stables building (Plate 1) is located to the south of No.18 The Terrace, adjacent to the Parry Street car park (Figure 1). Research undertaken by Palassis Architects (1999) indicates that the Stables, in its present location, was given approval for construction on 10<sup>th</sup> November 1874, at the request of the then Surgeon G.C. Attfield. The next record of the Stables is a photograph taken in 1878, showing the building in its current location and indicating that it was constructed between 1874 and 1877.

Plate 1: Fremantle Prison Stables building, view south-east



Figure 1: Sketch plan of Fremantle Prison, Stables building is at lower right of the complex, shaded in (Kerr 1992, revised 1998).



Various additions to the east, west and south sides of the Stables are noted on the 1897 sewerage plan. In relation to the archaeological assessments carried out by Eureka, the most significant of these is the addition to the eastern side of the building. This eastern addition included a copper boiler and drainage, together with a small woodshed for storing fuel for the copper. The structures were probably constructed of jarrah timber framing and weatherboard.

In 1966 work was undertaken to turn the southern portion of The Terrace into car parking space. Later, when parking requirements further increased, a ramp up to the yard behind the Stables was created. The area at the rear of the Stables was probably developed sometime in the late 1960's or early 1970's.

## **PROJECT AIMS**

### ***Southern Exterior Wall of the Stables***

In 2009 mitigation work was undertaken by BMW to conserve the Fremantle Prison Stables building. Deposit had been heaped against the southern wall to a height of approximately 2m during levelling for the car park. Moisture seepage from this deposit was degrading the limestone wall. A trench was dug along the southern exterior wall of the Stables to remove the deposit and allow inspection of surviving timber joists. Eureka was requested to investigate the archaeological potential of this area following the recovery of historic artefacts during the initial phase of digging the trench (Plate 2). The artefacts uncovered by BMW workmen carrying out the work include a number of old bottles (pre 1920) and a hollow, cast iron ball initially thought to be a ball from a convict era ball and chain (Plate 3).

The principal aims of the archaeological investigation were:

- to investigate the nature of the deposit along the Stable's southern exterior wall and to ascertain why a deposit that was apparently laid down in the second half of the 20th century should contain 19th century artefacts;
- to attempt to recover further 19th century artefacts relating to the earliest phases of the Fremantle Prison; and
- to determine the function of the timber joists attached to the Stable's southern exterior wall and visible protruding from the ground.

The location of Trench 1 is marked on Figure 2 on Page 8.

**Plate 2: Southern exterior wall of Stables showing trench dug by BMW and extent of proposed archaeological investigation (Trench 1)**



**Plate 3: Hollow, cast iron ball found by workmen adjacent to Stables southern exterior wall (Scale = 10cm)**





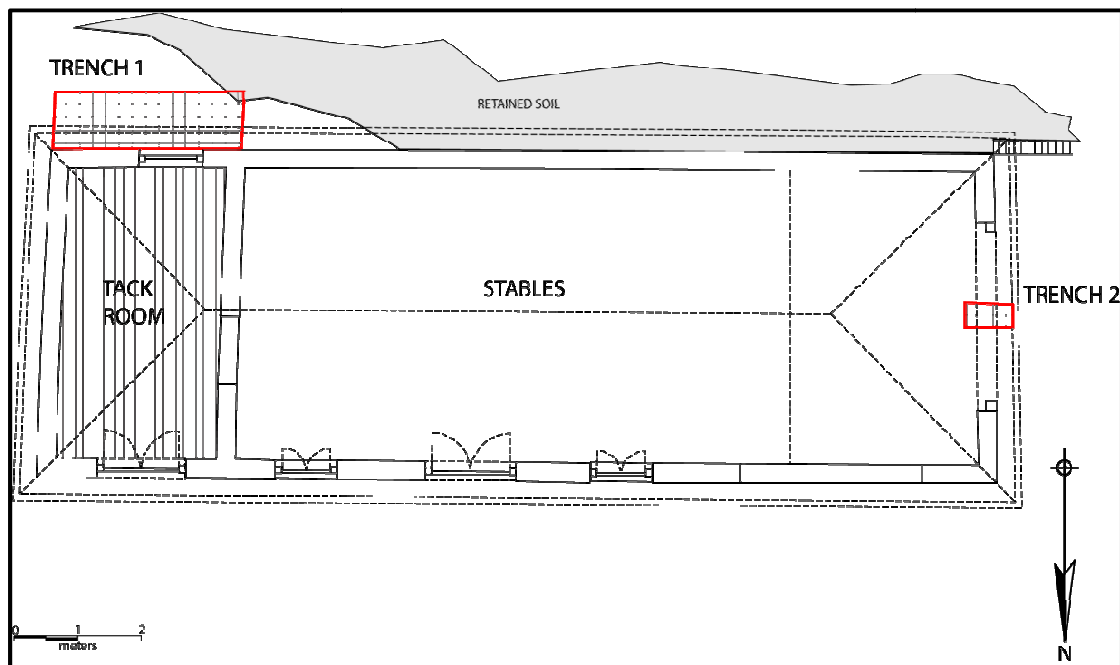
## Stables Doorway

At the request of Philip Griffiths Architects a small investigative trench (Trench 2) was also excavated across the threshold of the existing doorway at the west end of the Stables building. The principal aims of this archaeological investigation were:

- to determine whether the doorway is an original feature of the building, or a later addition cut through an earlier wall; and
- to characterise any structural features relating to the doorway.

The location of Trench 2 is marked on Figure 2 below.

**Figure 2: Plan of the Stables building with the locations of Trenches 1 and 2**



## EXCAVATION TEAM

The excavation and recording of Trench 1 (southern exterior wall) was undertaken on the 17<sup>th</sup> and 20<sup>th</sup> November 2009. Excavation and recording of Trench 2 (western doorway) was undertaken on the 30<sup>th</sup> November 2009.

The excavations were carried out by the following Eureka staff:

<i>Name</i>	<i>Position</i>
Sean Winter	Archaeologist
Illya Sparkes – Santos	Archaeologist

## EXCAVATION METHODS

### ***Southern Exterior Wall of the Stables***

A single trench (Trench 1), measuring 1 m wide (N-S) by 3 m long (E-W), was excavated along the southern exterior wall of the Stables building (Figure 2). The excavation was conducted by hand using trowel and hand shovel. Trench 1 was excavated into a slope that descended from a height of approximately 2 m at the west end of the trench, to just 50 cm above ground level at the east end of the trench. The west end of Trench 1 was excavated to a depth of approximately 60 cm. Further excavation at the west end of the trench would have required additional time and safety precautions beyond the scope of this work. The east end of the trench was excavated to the existing floor level of the Stables. A series of steps were excavated within the trench to maintain a relative level of approximately 60 cm below ground surface level. While this meant that the base of the southern Stables wall was only reached at the east end of Trench 1, it was considered appropriate to meet the aims of the excavation (Plate 4).

Standard excavation recording forms were used to record and describe stratigraphic units within the deposit. A photographic record of the excavation was also maintained.

Trench 1 contained an incredibly rich deposit of cultural material. In light of this, the excavated deposit was sampled by sieving every fourth bucket through a 5 mm screen. All artefacts recovered were placed in sample bags and labelled according to their excavation context and unit number. Artefacts were then taken to the University of Western Australia Archaeology Laboratory for analysis.

**Plate 4: Trench 1 showing structural elements and southern exterior Stables wall**



### ***Stables Doorway***

Trench 2, a shallow trench measuring approximately 70 cm (E-W) x 30 cm (N-S) was opened across the threshold of the Stables doorway (Figure 2). The trench was positioned centrally, equidistant from the two door jambs (Plate 5). The excavation was conducted by hand using trowel and hand shovel.

Standard excavation recording forms were used to record and describe stratigraphic units within the deposit. A photographic record of the excavation was also maintained.

**Plate 5: Trench 2, Stable doorway showing stratigraphic units 102 and 104**



## RESULTS

### SOUTHERN EXTERIOR WALL OF THE STABLES

The aim of this investigation was to determine the nature of the deposit adjacent to the southern exterior wall of the Stables.

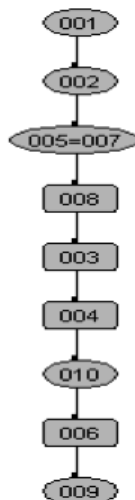
#### *Stratigraphy*

Nine stratigraphic units were identified during the excavation of Trench 1. These included four deposits, four structural elements and one organic feature. In brief, the stratigraphic units are:

- Unit (001) – Loose grey sand; topsoil
- Unit (002) – Yellow builder's sand
- Unit [003] – Degraded timber joist, structural element
- Unit [004] – Timber structure, probably a trellis
- Unit (005 / 007) – Mixed artefact-rich deposit
- Unit [006] – Brick pedestal for post
- Unit [008] – Grapevine, organic feature
- Unit (009) – Limestone levelling layer
- Unit (010) – Degraded post associated with [006]

The Harris Matrix in Figure 3 demonstrates how the various units relate to each other stratigraphically:

**Figure 3: Harris Matrix, Trench 1 Fremantle Stables**



Unit (001) is a modern topsoil layer that has built up since the deposit was laid down for levelling the car park, probably in the 1970s. It contains artefacts dating to the past 20 years and overlies Units (002) and (005 / 007), which relate to surface levelling for the car park.

Unit (002) comprises modern yellow builder's sand and appears to have been tipped in over Unit (005 / 007) to level out the east end of the fill adjacent to the southern side of the Stables. Unit (002) was probably deposited in the late 1970s to early 1980s as it contains two Emu Export beer cans that date to between 1977 and 1985.

Unit (005 / 007) is an artefact rich mixed deposit that was probably laid down in the 1950s (though potentially as late as the 1970s). This is indicated by the artefacts in the deposit. Unit (005 / 007) was initially thought to be a number of different units but it is most likely to be a mixed deposit brought in from various sources and deposited at the same time. All of the artefacts in this unit, which date from the 1830s to the 1950s, are in secondary deposition and out of their original context. It is from this unit that the workmen initially digging the trench found artefacts.

The redeposited Units (005 / 007) and (002) overlie and have been dumped over a number of structural features that all appear to have been part of a trellis or similarly designed support for grape vines. Unit [008] is a substantial grapevine, with a trunk 60mm thick, that has survived burial by redeposited materials. Units [003] and [004] are surviving timber elements of the trellis structure which are attached to the timbers at the southern wall of the Stables. Unit (010) is a degraded timber deposit that was very likely also a part of this trellis.

Unit [006] is a brick feature found towards the base of the excavation. It has a rectangular vertical opening and was initially thought to be a drain. The Unit (010) timber deposit entirely fills this vertical opening. When fully excavated it became clear that the opening was fully contained within the structure and had no outlet, and is therefore unlikely to have served as a drain. It appears to have held an upright post. The brick feature [006] continues into the south wall of the trench, so it was most likely a low brick wall designed to hold a number of vertical wooden posts as part of the trellis construction.

Brick feature [006] sits directly on top of Unit (009), a crushed limestone deposit. This unit is probably the same as Unit (102) from Trench 2 inside the Stables, and is interpreted as a levelling layer for the original construction of the Stables. Therefore, this deposit likely dates to the construction of the Stables in the 1870s and probably comprises the only convict era deposit located during this excavation.

## ***The Deposit***

Unit (005 / 007) is the deposit from which the artefacts derived and comprises approximately 95% of all sediment excavated from the trench. As previously discussed this unit has been brought in from elsewhere and redeposited in this location. The soil is extremely mixed and is made up of numerous layers of slightly different sediments. Generally grey in colour, the deposit is alkaline, and there is excellent organic preservation with timber and particularly bone, surviving well within the deposit. It is clear from the cultural material in the deposit that this sediment has been introduced to the site from more than one location. It was deposited as a single episode, most likely as part of levelling undertaken prior to construction of the upper car park.

The origin or origins of this levelling deposit at the back of the Stables is unclear. Some of it may originate from within the prison complex, however it is likely, on the basis of archaeological material recovered from the fill, that most of it was introduced from outside. Bavin (1993) conducted archaeological excavations within the walls of Fremantle Prison shortly after its closure and concluded that there had been extensive mixing and redepositing of sediments throughout the prison complex. The artefact assemblage excavated by Bavin was dominated by construction materials but included numerous items that were manufactured within the prison, such as boot heels (Bavin 1993:429-431). Recent excavations undertaken by Eureka in the Fremantle Prison Parade Ground and nearby No.14, The Terrace, recovered similar assemblages of archaeological material (Burke *et al.* 2009:38, Sparkes-Santos and Stedman 2010 in prep.).

## ***Structural Remains***

Structural timber [003] / [004] at the southern exterior wall of the Stables may be the remains of a trellis or similar structure designed to support grape vines. The structure appears to have been supported by the extant upright timber joists that are set against the southern exterior wall. Excavation revealed a number of other timber joists and planks that run horizontal to these uprights, both along the wall and at right angles away from the wall. These timbers were variably preserved; some were in very good condition, while others were in a poor state of preservation. It was not possible to determine the exact form of the structure, however the timbers had been nailed and there was no evidence of carpentry joints. The various joists are not uniform and it appears that pieces of miscellaneous timber were utilised in the construction of this structure.

A large grapevine [008] was also unearthed during excavation. This consisted of a main vine stem, measuring 60mm in diameter, with numerous subsidiary smaller stems running from it. There was a clear stratigraphic link between the smaller stems and the structural timber remains and the interpretation is that the timber structure was designed to support this vine.

As noted above, the brick structure [006] seems designed to support an upright timber post (101). The existing post is much larger however, and in a poorer state of preservation than the trellis timbers. This suggests that it is older than the other trellis timbers and may relate to an earlier structure along the southern exterior wall of the Stables. The brick structure continues into the south section of Trench 1 and its full extent was not uncovered. It seems likely that this structure was intended as more than a support for a single timber and further excavation to expose its full extent would be required to determine its function.

Unit (005 / 007) was deposited over and around these various structural features, and therefore predates the deposition of sediment in this location. The structure consequently pre-dates 1950, but may be considerably older as the size of the grape vine would indicate it had been growing for some time. A number of intact nails embedded within individual timbers from the trellis [003] / [004] were recovered. Removal and dating of these nails may provide a date for this structure. It may also be possible to determine an age for the bricks used in the brick structure [006].

### ***Artefacts***

A large artefact assemblage was recovered from the deposit at the external southern wall of the Stables (Plate 6, Plate 7 & Plate 8). All artefacts have been cleaned and a preliminary analysis conducted. Artefacts were identified and categorised by form and function and, where diagnostic features were preserved, for probable date of manufacture. A catalogue of artefacts is provided in Appendix 1. No additional analysis of artefacts has been undertaken although there is clearly potential to work further on this collection of archaeological material.



**Plate 6: Toothbrush handle with scratched initials (Scale = 10cm)**



**Plate 7: Transfer printed ceramic rim sherd (Scale = 10cm)**



**Plate 8: Complete clear glass bottle (Scale = 10cm)**



The majority of excavated artefactual material is made of glass, ceramic, bone or metal. More than half the assemblage relates to food or beverage consumption. Hardware and structural material makes up about twenty five percent of the assemblage. No artefacts such as boot heels, known to have been manufactured within the prison, were recovered from the deposit. A summary of the artefact assemblage recovered from Trench 1 is provided in Table 1 and Table 2 below. The full artefact catalogue from the Stables excavations also forms Appendix 1 of this report.

**Table 1: Excavated material from Trench 1 - artefact form**

<i>Artefact form</i>	<i>No of Artefacts (n=561)</i>	<i>Percentage of Excavated Assemblage</i>
Bone	115	20.50%
Ceramic	85	15.15%
Cloth	1	0.18%
Fossil	1	0.18%
Coal	1	0.18%
Glass	151	26.92%
Metal	145	25.85%
Plastic	5	0.89%
Rubber	7	1.25%
Shell	13	2.32%
Wood	7	1.25%
Other Structural Element	30	5.35%

**Table 2: Excavated material from Trench 1 - artefact function**

<i>Artefact form</i>	<i>No of Artefacts (n=561)</i>	<i>Percentage of Excavated Assemblage</i>
Alcohol	59	10.52%
Armament	4	0.71%
Clothing	2	0.36%
Other domestic items	1	0.18%
Food	271	48.31% <sup>o</sup>
Hardware	126	22.46%
Personal Item	4	0.71%
Pharmaceutical	9	1.60%
Recreation	10	1.78%
Fuel	2	0.36%
Structural	32	5.70%
Unknown	41	7.31%

## ***Dating of Excavated Artefacts***

Only 46 artefacts contained datable diagnostic information. These include bottle and window glass, metal cans and nails. With additional time and research a number of ceramic artefacts within the assemblage may also be dated. In most cases an estimated age range for artefacts was determined. The earliest possible date for any artefact within the assemblage is 1830 which comes from the four hollow, cast iron balls subsequently identified as shrapnel shot (see below for discussion). There are several artefacts within the assemblage that can confidently be dated to pre 1900, including a clay tobacco pipe fragment and a pair of iron nails. Although a number of items such as the beer cans are much more recent, dating within the last 20 years, only a small number of artefacts are likely to post-date 1940.

## ***Cannonballs***

Eureka has been asked to report on four hollow, cast iron balls recovered from Trench 1. The first of these, found by workmen in the deposit at the south of the Stables, was originally thought to be from a convict era ball and chain. All four of the balls have diameters of 110 mm, weigh 3.3 kg and have a 17mm diameter circular hole and a 25 mm circular mark (Plate 9). Analysis indicates that they are in fact “spherical case shot” or “shrapnel shot”, invented in 1748 by Lt. Henry Shrapnel of the British Royal Artillery (Dupuy 1990:219). The hollow ball was filled with lead shot, an explosive charge and then filled with sulphur that hardened to hold the shot in place. The hole would have accommodated a fuse (Lissak 1915:439).

During the second half of the 19<sup>th</sup> century the Prison kept a six pounder gun at the front gates to alert the town of Fremantle to escapees; however a gun of this size would have been too small to fire these balls (Plate 10). Judging by their diameter, the balls recovered from Trench 1 were intended for use in a gun or mortar with a calibre larger than the six pounder, but smaller than an eighteen pounder carronade (Stanbury, pers comm.). The most probable artillery piece would therefore have been either a twelve or fourteen pounder. It is unlikely that these shells derive from the prison itself. Further research into the use of case shot by the British Navy in Western Australia may determine a location where shells were discarded when they became obsolete. This could potentially help to determine where the (005 / 007) deposit originated.

Plate 9: Case shot (c. 1825) recovered from Trench 1

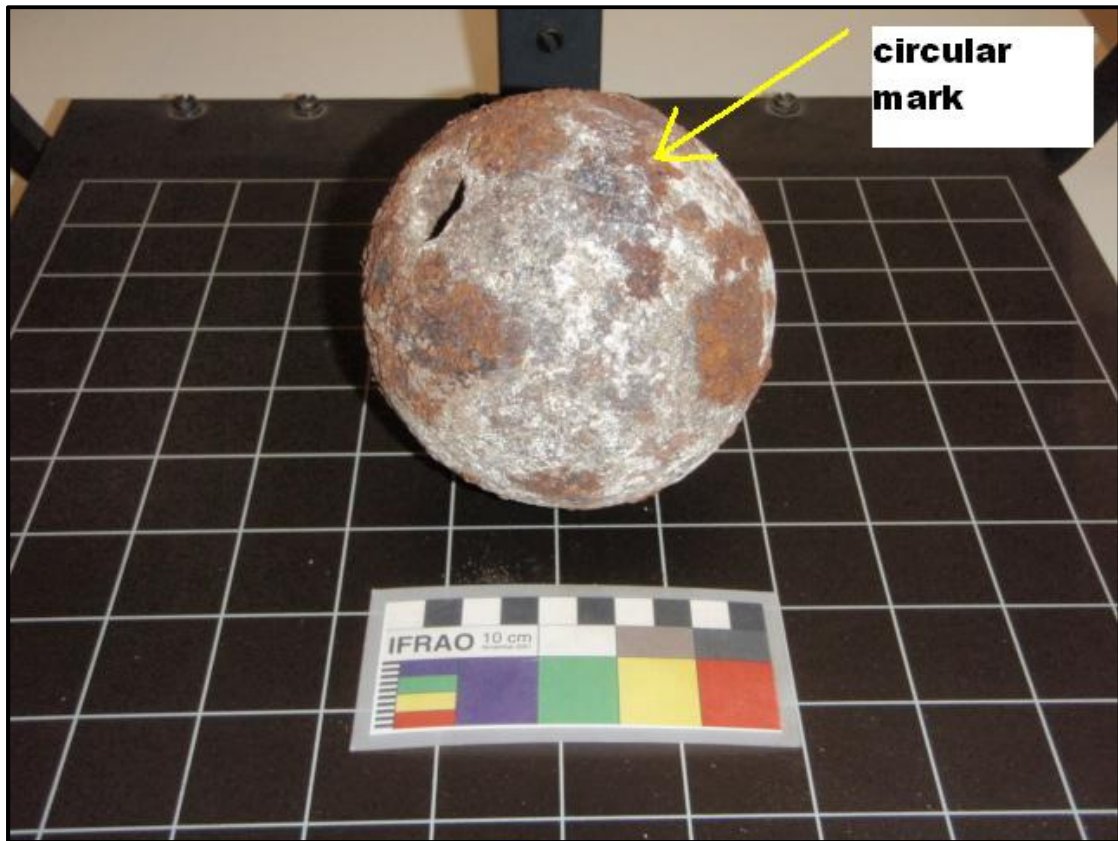


Plate 10: Six pounder gun outside Fremantle Prison entrance c.1860



## STABLE DOORWAY

### *Stratigraphy*

The excavation of Trench 2 at the Stable doorway identified nine stratigraphic units:

Unit (100) - Modern concrete / bitumen at surface level

Unit (101) - Modern levelling gravel

Unit (102) - Crushed limestone levelling layer

Unit [103] - Timber post

Unit [104] - Metal cylinders

Unit (105) - Sandy grey deposit (possibly degraded cement)

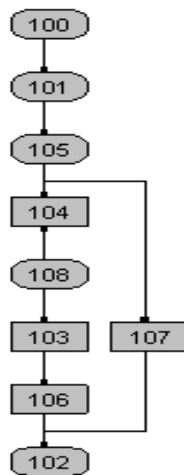
Unit [106] - Posthole for unit [103] and (108)

Unit [107] - Degraded timber joist

Unit (108) - Fill of posthole [106]

The Harris matrix in Figure 4 demonstrates how the nine units relate to each other stratigraphically.

**Figure 4: Harris Matrix, Trench 2 Fremantle Stables**



The bitumen / concrete (100) and gravel (101) are modern units which overlie original features. Directly beneath these are a grey sandy layer (105), external to the door threshold, and a crushed limestone layer (102) inside the threshold. Unit (105), a grey sandy deposit, overlies the structural features which all cut into Unit (102). Unit (105), once removed, was shown to overlie Unit (102). Unit (102) is similar to the crushed limestone used throughout the prison as a levelling layer and is interpreted as being the original floor surface of the Stables.

The structural elements of Trench 2 consist of a posthole [106] filled with deposit (108) and the remains of a post [103], two identical small metal cylinders [104] which are inserted into Unit (102), and a degraded piece of timber [107] which runs horizontally along the line of the door threshold (externally) and is set into Unit (102). This timber is very degraded and set into the limestone levelling layer (102). The posthole is also cut into this unit.

The posthole is interpreted here as being dug to support an upright post upon which double doors could close. The two metal cylinders are interpreted as being locking mechanisms into which vertical bolts would be shot to lock the doors. The horizontal timber runs along the door threshold and provides a floor level demarcation point between the interior and exterior of the Stables. There is no clear stratigraphic relationship between the posthole, the metal cylinders and the horizontal timber. However it is unlikely that two locking bolts would be used on one side of an upright timber joist. Thus in this case, the metal cylinders are interpreted as being a later intrusion, introduced after the digging of the posthole.

The results of this excavation would suggest that the doorway is an original feature of the Stables. No evidence of wall foundations was recovered and instead the crushed limestone layer found throughout the prison for levelling and as a floor was located. Evidence would suggest that the doorway originally had two doors which swung outwards on hinges closing on a central timber pillar. This pillar appears to have been replaced later and the doors locked at ground level with vertical bolts. These double doors were probably replaced before the current bitumen / concrete floor was laid down and the subsequent installation of the vertical roller door. The grey sandy layer clearly postdates the installation of the metal locking bolts, but probably predates the change to a vertical roller door. As such it is interpreted as a possible levelling layer of floor surface external to the Stables, prior to the laying down on the bitumen.

## CONCLUSIONS AND INTERPRETATION

An archaeological investigation of the Stables building at Fremantle Prison has established that a levelling deposit to the south of the building was brought in from somewhere outside the prison and probably deposited sometime between the 1950s and 1970s. Prior to the levelling of this area for a car park, a trellis or similar structure designed to support a grapevine existed along the southern external wall of the Stables. The remains of a brick structure of as yet unknown function are also located in this area. Archaeological material excavated from this area dates from between 1880 and 1940. It includes a variety of domestic items used predominantly in food preparation and consumption. The origin of this material is as yet unknown. It does not appear to be the result of prison activities and has presumably been brought into the Prison from another location. While some construction materials were recovered, these only comprised approximately 25% of the entire assemblage. In particular there are no artefacts such as boot heels, which were manufactured within the prison. This deposit is therefore similar to that excavated by Bavin (1993) from the Fremantle Roundhouse well.

Bavin (1993) concluded that a large percentage of the Roundhouse Well artefact assemblage was redeposited, originating from outside the Roundhouse. She suggested that the fill of the well had been brought in from the sand dunes surrounding Fremantle, where the local population had been discarding their rubbish "...from the second quarter of the nineteenth century up until the mid twentieth century" (Bavin 1993: 331). While the Roundhouse well assemblage also contained a large amount of construction debris, Bavin concluded that much of it was the result of specific periods of renovation within the Roundhouse. As a result, construction debris may have been over represented in the artefact assemblage (Bavin 1993: 330).

With this in mind, is it difficult to draw a definitive link between artefacts from the Stables excavation and use of Fremantle Prison. Further research into the development of the car park south of the Stables may shed further light on the origin of the deposit. The dominance of food storage and preparation items, as well as other domestic material, clearly indicates that these artefacts originated from an area of domestic refuse disposal. The large quantity of animal bone, much of which shows evidence of butchering, supports this. Further analysis of bone material to determine the numbers and species of animals represented in the deposit may provide additional clues to the original source of this material. Additional investigation of specific artefact classes within the assemblage could provide additional and potentially more specific information about the people to whom they belonged. Further excavation adjacent to the southern exterior wall of the Stables is likely to yield more archaeological material.



Despite being in secondary deposition, the artefact rich nature of this deposit and the good organic preservation within it means it has great potential to yield significant information about early settlement in Fremantle.

Hollow, cast iron balls recovered from this deposit are spherical case shot, a type of shrapnel bomb.

Archaeological excavation has proved that the west doorway of the Stables is an original feature of the building dating back to its 1850s construction. Initially, it was probably secured by double doors with a central wooden pillar. This pillar was removed at sometime in the past and replaced with new doors that bolted at floor level into a base plate. The original double doors are now replaced by a metal roller door.

## RECOMMENDATIONS

An archaeological investigation of nominated areas within the Fremantle Prison Stables has been undertaken. It is **recommended** that:

- The deposit adjacent to the southern exterior wall of the Stables, despite being in secondary deposition, is potentially significant. The artefact rich nature of this deposit and the good organic preservation within it means it has great potential to yield information about early settlement in Fremantle.
- The brick structure at the rear of the Stables could be further investigated to determine its function and date of construction.
- Any future ground disturbance undertaken around the Stables building should be conducted with an archaeologist in attendance as part of an archaeological watching brief.

## REFERENCES

- Bavin, L. 1994. *The Punishment Administered: Archaeology and Penal Institutions in the Swan River Colony, Western Australia*. Unpublished PhD Thesis for the Centre for Archaeology, Department of Geography. University of Western Australia.
- Burke, S., Paterson, A. and K. Fleming 2009. *Fremantle Prison Parade Ground Archaeological Test Excavations (Stage 3)*. Unpublished report for Palassis Architects and the Department for Housing and Works.
- Dupuy, T.N. (1990). *The Evolution of Weapons and Warfare*. New York: Da Capo Press.
- Kerr, J. S. (1992 revised 1998). *Fremantle Prison – A Policy for its Conservation*.
- Lissak, O. M. 1915. *Ordnance and Gunnery: a Text-book Prepared for the Cadets of the United States Military Academy, West Point*. John Wiley and Sons: New York.
- Kevin Palassis Architects, 1999, *The Stable, at 18, The Terrace, Fremantle Prison, conservation plan*. Unpublished Short Report for Transfield on behalf of Contract and Management Services.

## APPENDIX 1

### FREMANTLE PRISON STABLES: ARTEFACT CATALOGUE

<i>DBID</i>	<i>Category</i>	<i>Material</i>	<i>Function</i>	<i>Sub-function</i>	<i>Shape</i>	<i>Colour</i>	<i>Completeness</i>	<i>Description</i>	<i>Location</i>	<i>Inscription</i>	<i>Earliest and Latest Dates</i>	<i>Notes</i>
FPS-1	Bone	bone	long bone	butchered				BUTCHERED LONG BONE	UNIT 005, T1			
FPS-2	Bone	bone	long bone	butchered				BUTCHERED LONG BONE	UNIT 005, T1			
FPS-3	Bone	bone	T-bone	butchered				BUTCHERED T-BONE	UNIT 005, T1			
FPS-4	Bone	bone	long bone	butchered				CHOP OR RIB-EYE	UNIT 005, T1			
FPS-5	Bone	bone	Mandible	Teeth				MANDIBLE W/ TEETH	UNIT 005, T1			
FPS-6	Bone	bone	Mandible	Teeth				MANDIBLE W/ TEETH	UNIT 005, T1			
FPS-7	Bone	bone	Mandible	Teeth				MANDIBLE W/ TEETH	UNIT 005, T1			Large Animal
FPS-8	Bone	bone	Scapula	butchered				BUTCHERED SCAPULA	UNIT 005, T1			
FPS-9	Bone	bone	Mandible	Teeth				MANDIBLE W/ TEETH	UNIT 005, T1			

<i>DBID</i>	<i>Category</i>	<i>Material</i>	<i>Function</i>	<i>Sub-function</i>	<i>Shape</i>	<i>Colour</i>	<i>Completeness</i>	<i>Description</i>	<i>Location</i>	<i>Inscription</i>	<i>Earliest and Latest Dates</i>	<i>Notes</i>
FPS-10	Bone	bone	Mandible	Intact			Complete	MANDIBLE	UNIT 005, T1			
FPS-11	Bone	bone	long bone	butchered				BUTCHERED LONG BONE	UNIT 005, T1			Large Animal
FPS-12	Bone	bone	Rib	butchered				BUTCHERED RIB BONE	UNIT 005, T1			
FPS-13	Bone	bone	Rib	butchered				BUTCHERED RIB BONE	UNIT 005, T1			
FPS-14	Bone	bone	Rib	butchered				BUTCHERED RIB BONE	UNIT 005, T1			
FPS-15	Bone	bone	Rib	butchered				BUTCHERED RIB BONE	UNIT 005, T1			
FPS-16	Bone	bone		butchered				BUTCHERED BONE	UNIT 005, T1			
FPS-17	Bone	bone	long bone	butchered				BUTCHERED LONG BONE	UNIT 005, T1			
FPS-18	Bone	bone	Rib	butchered				BUTCHERED RIB BONE	UNIT 005, T1			
FPS-19	Bone	bone		butchered				BUTCHERED BONE	UNIT 005, T1			
FPS-20	Bone	bone		butchered				BUTCHERED BONE	UNIT 005, T1			

<i>DBID</i>	<i>Category</i>	<i>Material</i>	<i>Function</i>	<i>Sub-function</i>	<i>Shape</i>	<i>Colour</i>	<i>Completeness</i>	<i>Description</i>	<i>Location</i>	<i>Inscription</i>	<i>Earliest and Latest Dates</i>	<i>Notes</i>
FPS-21	Bone	bone		butchered				BUTCHERED BONE	UNIT 005, T1			
FPS-22	Bone	bone		butchered				BUTCHERED BONE	UNIT 005, T1			
FPS-23	Bone	bone	long bone	Unknown			Complete	INTACT LONG BONE	UNIT 005, T1			
FPS-24	Bone	bone	Vertebrae	Unknown			Complete	FISH VERTEBRAE	UNIT 005, T1			
FPS-25	Bone	bone	long bone	Unknown			Complete	INTACT LONG BONE	UNIT 005, T1			
FPS-26	Bone	bone	long bone	Unknown			Complete	INTACT LONG BONE	UNIT 005, T1			
FPS-27	Bone	bone	Pelvis	Unknown			Complete	INTACT PELVIS - CHICKEN?	UNIT 005, T1			
FPS-28	Bone	bone	Vertebrae	Unknown			Complete	INTACT VERTEBRAE	UNIT 005, T1			
FPS-29	Bone	bone	Vertebrae	Unknown			Complete	INTACT VERTEBRAE	UNIT 005, T1			
FPS-30	Bone	bone	Vertebrae	Unknown			Complete	INTACT VERTEBRAE	UNIT 005, T1			

<i>DBID</i>	<i>Category</i>	<i>Material</i>	<i>Function</i>	<i>Sub-function</i>	<i>Shape</i>	<i>Colour</i>	<i>Completeness</i>	<i>Description</i>	<i>Location</i>	<i>Inscription</i>	<i>Earliest and Latest Dates</i>	<i>Notes</i>
FPS-31	Bone	bone	long bone	Unknown			Complete	INTACT LONG BONE	UNIT 005, T1			
FPS-32	Bone	bone	long bone	Unknown			Complete	INTACT LONG BONE	UNIT 005, T1			
FPS-33	Bone	bone	long bone	Unknown			Complete	INTACT LONG BONE	UNIT 005, T1			
FPS-34	Bone	bone	Unknown	Unknown			Complete	FISH BONE	UNIT 005, T1			
FPS-35	Bone	bone	long bone	Unknown			Incomplete	BROKEN LONG BONE	UNIT 005, T1			
FPS-36	Bone	bone	long bone	Unknown			Incomplete	BROKEN LONG BONE	UNIT 005, T1			
FPS-37	Bone	bone	long bone	Unknown			Incomplete	BROKEN LONG BONE	UNIT 005, T1			
FPS-38	Bone	bone	long bone	Unknown			Incomplete	BROKEN LONG BONE	UNIT 005, T1			
FPS-39	Bone	bone	long bone	Unknown			Incomplete	BROKEN LONG BONE	UNIT 005, T1			
FPS-40	Bone	bone	long bone	Unknown			Incomplete	BROKEN LONG BONE	UNIT 005, T1			

<i>DBID</i>	<i>Category</i>	<i>Material</i>	<i>Function</i>	<i>Sub-function</i>	<i>Shape</i>	<i>Colour</i>	<i>Completeness</i>	<i>Description</i>	<i>Location</i>	<i>Inscription</i>	<i>Earliest and Latest Dates</i>	<i>Notes</i>
FPS-41	Bone	bone	long bone	Unknown			Incomplete	BROKEN LONG BONE	UNIT 005, T1			
FPS-42	Bone	bone	long bone	Unknown			Incomplete	BROKEN LONG BONE	UNIT 005, T1			
FPS-43	Bone	bone	Scapula	Unknown			Incomplete	BROKEN SCAPULA	UNIT 005, T1			
FPS-44	Bone	bone	Scapula	Unknown			Incomplete	BROKEN SCAPULA	UNIT 005, T1			
FPS-45	Bone	bone	Scapula	Unknown			Incomplete	BROKEN SCAPULA	UNIT 005, T1			
FPS-46	Bone	bone	Unknown	Unknown			Incomplete	BROKEN BONE - DIAGNOSTIC	UNIT 005, T1			
FPS-47	Bone	bone	Unknown	Unknown			Incomplete	BROKEN BONE - DIAGNOSTIC	UNIT 005, T1			
FPS-48	Bone	bone	Unknown	Unknown			Incomplete	BROKEN BONE - DIAGNOSTIC	UNIT 005, T1			
FPS-49	Bone	bone	Unknown	Unknown			Incomplete	BROKEN BONE - DIAGNOSTIC	UNIT 005, T1			

<i>DBID</i>	<i>Category</i>	<i>Material</i>	<i>Function</i>	<i>Sub-function</i>	<i>Shape</i>	<i>Colour</i>	<i>Completeness</i>	<i>Description</i>	<i>Location</i>	<i>Inscription</i>	<i>Earliest and Latest Dates</i>	<i>Notes</i>
FPS-50	Bone	bone	Unknown	Unknown			Incomplete	BROKEN BONE - DIAGNOSTIC	UNIT 005, T1			
FPS-51	Bone	bone	Unknown	Unknown			Incomplete	BROKEN BONE - DIAGNOSTIC	UNIT 005, T1			
FPS-52	Bone	bone	Unknown	Unknown			Incomplete	BROKEN BONE - DIAGNOSTIC	UNIT 005, T1			
FPS-53	Bone	bone	Unknown	Unknown			Incomplete	BROKEN BONE - DIAGNOSTIC	UNIT 005, T1			
FPS-54	Bone	bone	Unknown	Unknown			Incomplete	BROKEN BONE - DIAGNOSTIC	UNIT 005, T1			
FPS-55	Bone	bone	Unknown	Unknown			Incomplete	BROKEN BONE - DIAGNOSTIC	UNIT 005, T1			
FPS-56	Bone	bone	Unknown	Unknown			Incomplete	BROKEN BONE - DIAGNOSTIC	UNIT 005, T1			
FPS-57	Bone	bone	Unknown	Unknown			Incomplete	BROKEN BONE - DIAGNOSTIC	UNIT 005, T1			



<i>DBID</i>	<i>Category</i>	<i>Material</i>	<i>Function</i>	<i>Sub-function</i>	<i>Shape</i>	<i>Colour</i>	<i>Completeness</i>	<i>Description</i>	<i>Location</i>	<i>Inscription</i>	<i>Earliest and Latest Dates</i>	<i>Notes</i>
FPS-58	Bone	bone	Unknown	Unknown			Incomplete	BROKEN BONE - DIAGNOSTIC	UNIT 005, T1			
FPS-59	Bone	bone	Scapula	Unknown			Incomplete	BROKEN SCAPULA	UNIT 005, T1			
FPS-60	Bone	bone	Vertebrae	Unknown			Incomplete	BROKEN VERTEBRAE	UNIT 005, T1			
FPS-61	Bone	bone	long bone	Unknown			Incomplete	BROKEN LONG BONE	UNIT 005, T1			
FPS-62	Bone	bone		Unknown			Fragment	BONE FRAGMENT	UNIT 005, T1			
FPS-63	Bone	bone		Unknown			Fragment	BONE FRAGMENT	UNIT 005, T1			
FPS-64	Bone	bone		Unknown			Fragment	BONE FRAGMENT	UNIT 005, T1			
FPS-65	Bone	bone		Unknown			Fragment	BONE FRAGMENT	UNIT 005, T1			
FPS-66	Bone	bone		Unknown			Fragment	BONE FRAGMENT	UNIT 005, T1			
FPS-67	Bone	bone		Unknown			Fragment	BONE FRAGMENT	UNIT 005, T1			

<i>DBID</i>	<i>Category</i>	<i>Material</i>	<i>Function</i>	<i>Sub-function</i>	<i>Shape</i>	<i>Colour</i>	<i>Completeness</i>	<i>Description</i>	<i>Location</i>	<i>Inscription</i>	<i>Earliest and Latest Dates</i>	<i>Notes</i>
FPS-68	Bone	bone		Unknown			Fragment	BONE FRAGMENT	UNIT 005, T1			
FPS-69	Bone	bone		Unknown			Fragment	BONE FRAGMENT	UNIT 005, T1			
FPS-70	Bone	bone		Unknown			Fragment	BONE FRAGMENT	UNIT 005, T1			
FPS-71	Bone	bone		Unknown			Fragment	BONE FRAGMENT	UNIT 005, T1			
FPS-72	Bone	bone		Unknown			Fragment	BONE FRAGMENT	UNIT 005, T1			
FPS-73	Bone	bone		Unknown			Fragment	BONE FRAGMENT	UNIT 005, T1			
FPS-74	Bone	bone		Unknown			Fragment	BONE FRAGMENT	UNIT 005, T1			
FPS-75	Bone	bone		Unknown			Fragment	BONE FRAGMENT	UNIT 005, T1			
FPS-76	Bone	bone		Unknown			Fragment	BONE FRAGMENT	UNIT 005, T1			
FPS-77	Bone	bone		Unknown			Fragment	BONE FRAGMENT	UNIT 005, T1			
FPS-78	Bone	bone		Unknown			Fragment	BONE FRAGMENT	UNIT 005, T1			

<i>DBID</i>	<i>Category</i>	<i>Material</i>	<i>Function</i>	<i>Sub-function</i>	<i>Shape</i>	<i>Colour</i>	<i>Completeness</i>	<i>Description</i>	<i>Location</i>	<i>Inscription</i>	<i>Earliest and Latest Dates</i>	<i>Notes</i>
FPS-79	Bone	bone		Unknown			Fragment	BONE FRAGMENT	UNIT 005, T1			
FPS-80	Bone	bone		Unknown			Fragment	BONE FRAGMENT	UNIT 005, T1			
FPS-81	Bone	bone		Unknown			Fragment	BONE FRAGMENT	UNIT 005, T1			
FPS-82	Bone	bone		Unknown			Fragment	BONE FRAGMENT	UNIT 005, T1			
FPS-83	Bone	bone		Unknown			Fragment	BONE FRAGMENT	UNIT 005, T1			
FPS-84	Bone	bone		Unknown			Fragment	BONE FRAGMENT	UNIT 005, T1			
FPS-85	Bone	bone		Unknown			Fragment	BONE FRAGMENT	UNIT 005, T1			
FPS-86	Bone	bone		Unknown			Fragment	BONE FRAGMENT	UNIT 005, T1			
FPS-87	Bone	bone		Unknown			Fragment	BONE FRAGMENT	UNIT 005, T1			
FPS-88	Bone	bone		Unknown			Fragment	BONE FRAGMENT	UNIT 005, T1			
FPS-89	Bone	bone		Unknown			Fragment	BONE FRAGMENT	UNIT 005, T1			

<i>DBID</i>	<i>Category</i>	<i>Material</i>	<i>Function</i>	<i>Sub-function</i>	<i>Shape</i>	<i>Colour</i>	<i>Completeness</i>	<i>Description</i>	<i>Location</i>	<i>Inscription</i>	<i>Earliest and Latest Dates</i>	<i>Notes</i>
FPS-90	Bone	bone		Unknown			Fragment	BONE FRAGMENT	UNIT 005, T1			
FPS-91	Bone	bone		Unknown			Fragment	BONE FRAGMENT	UNIT 005, T1			
FPS-92	Bone	bone		Unknown			Fragment	BONE FRAGMENT	UNIT 005, T1			
FPS-93	Bone	bone		Unknown			Fragment	BONE FRAGMENT	UNIT 005, T1			
FPS-94	Bone	bone		Unknown			Fragment	BONE FRAGMENT	UNIT 005, T1			
FPS-95	Bone	bone		Unknown			Fragment	BONE FRAGMENT	UNIT 005, T1			
FPS-96	Bone	bone		Unknown			Fragment	BONE FRAGMENT	UNIT 005, T1			
FPS-97	Bone	bone		Unknown			Fragment	BONE FRAGMENT	UNIT 005, T1			
FPS-98	Bone	bone		Unknown			Fragment	BONE FRAGMENT	UNIT 005, T1			
FPS-99	Bone	bone		Unknown			Fragment	BONE FRAGMENT	UNIT 005, T1			
FPS-100	Bone	bone		Unknown			Fragment	BONE FRAGMENT	UNIT 005, T1			

<i>DBID</i>	<i>Category</i>	<i>Material</i>	<i>Function</i>	<i>Sub-function</i>	<i>Shape</i>	<i>Colour</i>	<i>Completeness</i>	<i>Description</i>	<i>Location</i>	<i>Inscription</i>	<i>Earliest and Latest Dates</i>	<i>Notes</i>
FPS-101	Bone	bone		Unknown			Fragment	BONE FRAGMENT	UNIT 005, T1			
FPS-102	Bone	bone		Unknown			Fragment	BONE FRAGMENT	UNIT 005, T1			
FPS-103	Bone	bone		Unknown			Fragment	BONE FRAGMENT	UNIT 005, T1			
FPS-104	Bone	bone		Unknown			Fragment	BONE FRAGMENT	UNIT 005, T1			
FPS-105	Bone	bone		Unknown			Fragment	BONE FRAGMENT	UNIT 005, T1			
FPS-106	Bone	bone		Unknown			Fragment	BONE FRAGMENT	UNIT 005, T1			
FPS-107	Bone	bone		Unknown			Fragment	BONE FRAGMENT	UNIT 005, T1			
FPS-108	Bone	bone		Unknown			Fragment	BONE FRAGMENT	UNIT 005, T1			
FPS-109	Bone	bone		Unknown			Fragment	BONE FRAGMENT	UNIT 005, T1			
FPS-110	Bone	bone		Unknown			Fragment	BONE FRAGMENT	UNIT 005, T1			
FPS-111	Bone	bone		Unknown			Fragment	BONE FRAGMENT	UNIT 005, T1			

<i>DBID</i>	<i>Category</i>	<i>Material</i>	<i>Function</i>	<i>Sub-function</i>	<i>Shape</i>	<i>Colour</i>	<i>Completeness</i>	<i>Description</i>	<i>Location</i>	<i>Inscription</i>	<i>Earliest and Latest Dates</i>	<i>Notes</i>
FPS-112	Bone	bone		Unknown			Fragment	BONE FRAGMENT	UNIT 005, T1			
FPS-113	Bone	bone		Unknown			Fragment	BONE FRAGMENT	UNIT 005, T1			
FPS-114	Glass	Glass	Alcohol	Beer	Bottle	Amber	Complete	Vic Bitter 750ml beer bottle, part label still attached	UNIT 005, T1			Good condition
FPS-115	Glass	Glass	Alcohol	Unknown	Bottle	Amber	Complete	2 PIECE VERTICAL OULD W/ SEPARATE BASE, CROWN SEAL	UNIT 005, T1	BASE - "m 1 8 6" AND "G 3 3"	1899-present	Good condition
FPS-116	Glass	Glass	Food	Pickle	Bottle	Green	Complete	2 PIECE VERTICAL OULD W/ SEPARATE BASE, SINGLE COLLAR FINISH	UNIT 005, T1	NONE	1850	max. height: 61.7mm, Good condition, diameter: 47.2mm

<i>DBID</i>	<i>Category</i>	<i>Material</i>	<i>Function</i>	<i>Sub-function</i>	<i>Shape</i>	<i>Colour</i>	<i>Completeness</i>	<i>Description</i>	<i>Location</i>	<i>Inscription</i>	<i>Earliest and Latest Dates</i>	<i>Notes</i>
FPS-117	Glass	Glass	Pharmaceutical	Medicine	Bottle	Clear	Complete	2 PIECE VERTICAL MOULD W/ SEPARATE BASE, PRESCRIPTION LIP	UNIT 005, T1	NONE	1890-1920	max. height: 94mm, Good condition, diameter: 44.6mm
FPS-118	Glass	Glass	Food	Unknown	Jar	Clear	Complete	OCTAGONAL, 2 PIECE VERTICAL MOULD W/ SEPARATE BASE PART	UNIT 005, T1	BASE - "C.S. & Co Ld" AND "8021"	Earliest: 1913	Cannington Shaw and Co - Lancashire UK, Max height: 123.6mm, Good condition, diameter: 68.7mm

<i>DBID</i>	<i>Category</i>	<i>Material</i>	<i>Function</i>	<i>Sub-function</i>	<i>Shape</i>	<i>Colour</i>	<i>Completeness</i>	<i>Description</i>	<i>Location</i>	<i>Inscription</i>	<i>Earliest and Latest Dates</i>	<i>Notes</i>
FPS-119	Glass	Glass	Food	Unknown	Bottle	Clear	Complete	2 PIECE VERTICAL MOULD W/ SEPARATE BASE, CROWN SEAL	UNIT 005, T1	"W. LETCHFORD " AND "TRADE MARK" AND FREMANTLE AND " THIS BOTTLE ALWAYS REMAINS THE PROPERTY OF W. LETCHFORD " PICTURE - LION RAMPANT IN SHIELD,	Earliest: 1899	Made in Fremantle, Good condition, diameter: 84.5mm
FPS-120	Glass	Glass	Food	Aerated water	Bottle	Clear	Body only	2 PIECE VERTICAL MOULD W/ SEPARATE BASE,	UNIT 005, T1	"Bunte CHICAGO"	Earliest: 1876	Made in Chicago USA, Good condition, diameter: 57mm



<i>DBID</i>	<i>Category</i>	<i>Material</i>	<i>Function</i>	<i>Sub-function</i>	<i>Shape</i>	<i>Colour</i>	<i>Completeness</i>	<i>Description</i>	<i>Location</i>	<i>Inscription</i>	<i>Earliest and Latest Dates</i>	<i>Notes</i>
FPS-121	Glass	Glass	Pharmaceutical	Medicine	Bottle	Clear	Complete	FLATTENED OVAL, 2 PIECE VERTICAL MOULD W/ SEPARATE BASE, PRESCRIPTION LIP	UNIT 005, T1		1890-1920	Good condition
FPS-122	Glass	Glass	Food	Unknown	Bottle	Clear	Complete	FLAT OCTAGONAL TWO PIECE MOULD	UNIT 005, T1	AGM TYPE 3 MARK, "1408 M"	1934-1948	Good condition
FPS-123	Glass	Glass	Food	Unknown	Bottle	Clear	Base only	2 PIECE MOULD W/ SEPARATE BASE,	UNIT 005, T1	PARTIAL "...TLE ALWAYS REMAINS... PROPERTY OF ... EC.COY.LTD "	1899-1920	Good condition, diameter: 55.7mm

<i>DBID</i>	<i>Category</i>	<i>Material</i>	<i>Function</i>	<i>Sub-function</i>	<i>Shape</i>	<i>Colour</i>	<i>Completeness</i>	<i>Description</i>	<i>Location</i>	<i>Inscription</i>	<i>Earliest and Latest Dates</i>	<i>Notes</i>
FPS-124	Glass	Glass	Pharmaceutical	Medicine	Bottle	Amber	Complete	CHAMFERED SQUARE, EXTERNAL SCREW TOP, 2 PIECE MOULD W/ SEPARATE BASE	UNIT 005, T1	NONE	Earliest: 1899	metal lid still intact, Max. height 101mm, Good condition
FPS-125	Bone	bone	long bone	Broken			Incomplete	BONE DIAGNOSTIC	UNIT 005, T1			
FPS-126	Ceramic	Earthenware	Smoking	Clay pipe	Central stem	White	Incomplete	CENTRAL PIPE STEM BOTH ENDS BROKEN	UNIT 005, T1			only clay pipe fragment recovered from deposit, max. height 32.6mm, Good condition
FPS-127	Ceramic	Earthenware	Food	Plate		White	Sherd	BODY PIECE	UNIT 005, T1	PARTIAL "...LKER BROS LTD ENGLAND" W/ CROWN		Good condition
FPS-128	Ceramic	Stoneware	Food	Saucer	Circular	Cream	Sherd	RIM, REFITS W/ FPS-129 AND FPS-130,	UNIT 005, T1			

<i>DBID</i>	<i>Category</i>	<i>Material</i>	<i>Function</i>	<i>Sub-function</i>	<i>Shape</i>	<i>Colour</i>	<i>Completeness</i>	<i>Description</i>	<i>Location</i>	<i>Inscription</i>	<i>Earliest and Latest Dates</i>	<i>Notes</i>
FPS-129	Ceramic	Stoneware	Food	Saucer	Circular	Cream	Sherd	RIM, REFITS W/ FPS-128 AND FPS-130	UNIT 005, T1			
FPS-130	Ceramic	Stoneware	Food	Saucer	Circular	Cream	Sherd	RIM, REFITS W/ FPS-128 AND FPS-129	UNIT 005, T1			
FPS-131	Ceramic	Porcelain	Food	Saucer	Circular	White	Sherd	RIM AND BASE	UNIT 005, T1			
FPS-132	Ceramic	Porcelain	Food	Cup		white, red, gold	Sherd	BASE AND WALL, RED AND GOLD RIM AROUND BASE AND RED AND GOLD DECORATION ON BASE, SILVER, BLACK AND GOLD MARKS ON WALL	UNIT 005, T1			

<i>DBID</i>	<i>Category</i>	<i>Material</i>	<i>Function</i>	<i>Sub-function</i>	<i>Shape</i>	<i>Colour</i>	<i>Completeness</i>	<i>Description</i>	<i>Location</i>	<i>Inscription</i>	<i>Earliest and Latest Dates</i>	<i>Notes</i>
FPS-133	Ceramic	Earthenware	Food	Vessel		Green, yellow, blue	Sherd	RIM AND WALL, HAND PAINTED, DECORATION INTERNAL AND EXTERNAL	UNIT 005, T1			
FPS-134	Ceramic	Earthenware	Food	Cup	Handle	Cream	Sherd	BLACK MARKINGS	UNIT 005, T1			
FPS-135	Ceramic	Stoneware	Food	Cup	Handle	Cream	Sherd	HOLLOW HANDLE FRAGMENT, GOLD MARKINGS	UNIT 005, T1			
FPS-136	Ceramic	Porcelain	Food	Saucer	Circular	White	Sherd	RIM AND BASE, REFITS W/ FPS-131, HAND PAINTED IMAGE OF PERSON IN RED, GREEN BLUE AND RED	UNIT 005, T1	"MADE... JAPAN"		Good condition

<i>DBID</i>	<i>Category</i>	<i>Material</i>	<i>Function</i>	<i>Sub-function</i>	<i>Shape</i>	<i>Colour</i>	<i>Completeness</i>	<i>Description</i>	<i>Location</i>	<i>Inscription</i>	<i>Earliest and Latest Dates</i>	<i>Notes</i>
FPS-137	Ceramic	Stoneware	Food	Unknown		White	Sherd	RIM, HAND PAINTED FLOWERS, SAME PATTERN AS FPS-138, 139, 140	UNIT 005, T1			
FPS-138	Ceramic	Stoneware	Food	Unknown		White	Sherd	RIM, HAND PAINTED FLOWERS, SAME PATTERN AS FPS-137, 139, 140	UNIT 005, T1			
FPS-139	Ceramic	Stoneware	Food	Unknown		White	Sherd	RIM, HAND PAINTED FLOWERS, SAME PATTERN AS FPS-138, 137, 140	UNIT 005, T1			
FPS-140	Ceramic	Stoneware	Food	Unknown		White	Sherd	RIM, HAND PAINTED FLOWERS, SAME PATTERN AS FPS-138, 139, 137	UNIT 005, T1			

<i>DBID</i>	<i>Category</i>	<i>Material</i>	<i>Function</i>	<i>Sub-function</i>	<i>Shape</i>	<i>Colour</i>	<i>Completeness</i>	<i>Description</i>	<i>Location</i>	<i>Inscription</i>	<i>Earliest and Latest Dates</i>	<i>Notes</i>
FPS-141	Ceramic	Stoneware	Food	Bowl		White	Sherd	RIM AND WALL, GREEN/GREY RIM PATTERN INTERNAL AND EXTERNAL, GEOMETRIC IMAGE, TRANSFER	UNIT 005, T1			
FPS-142	Ceramic	Stoneware	Food	Plate		White	Sherd	BASE, BLUE MARKING	UNIT 005, T1	"...LAND"		
FPS-143	Ceramic	Ironstone	Food	Vessel		Green	Sherd	RIM, GREEN WASH INTERNAL / EXTERNAL, WHITE PASTE	UNIT 005, T1			
FPS-144	Ceramic	Earthenware	Food	Unknown		White	Sherd	SMALL SHERD	UNIT 005, T1			
FPS-145	Ceramic	Earthenware	Food	Unknown		White	Sherd	SMALL SHERD	UNIT 005, T1			
FPS-146	Ceramic	Earthenware	Food	Unknown		White	Sherd	SMALL SHERD	UNIT 005, T1			
FPS-147	Ceramic	Earthenware	Food	Unknown		White	Sherd	SMALL SHERD	UNIT 005, T1			

<i>DBID</i>	<i>Category</i>	<i>Material</i>	<i>Function</i>	<i>Sub-function</i>	<i>Shape</i>	<i>Colour</i>	<i>Completeness</i>	<i>Description</i>	<i>Location</i>	<i>Inscription</i>	<i>Earliest and Latest Dates</i>	<i>Notes</i>
FPS-148	Ceramic	Earthenware	Food	Unknown		White	Sherd	SMALL SHERD	UNIT 005, T1			
FPS-149	Ceramic	Earthenware	Food	Unknown		White	Sherd	SMALL SHERD	UNIT 005, T1			
FPS-150	Ceramic	Earthenware	Food	Unknown		White	Sherd	SMALL SHERD	UNIT 005, T1			
FPS-151	Ceramic	Earthenware	Food	Unknown		White	Sherd	SMALL SHERD	UNIT 005, T1			
FPS-152	Ceramic	Stoneware	Food	Unknown		White	Sherd	SMALL SHERD	UNIT 005, T1			
FPS-153	Ceramic	Stoneware	Food	Unknown		White	Sherd	SMALL SHERD	UNIT 005, T1			
FPS-154	Ceramic	Stoneware	Food	Unknown		White	Sherd	SMALL SHERD	UNIT 005, T1			
FPS-155	Ceramic	Stoneware	Food	Unknown		White	Sherd	SMALL SHERD	UNIT 005, T1			
FPS-156	Ceramic	Stoneware	Food	Unknown		White	Sherd	SMALL SHERD	UNIT 005, T1			
FPS-157	Ceramic	Stoneware	Food	Unknown		White	Sherd	SMALL SHERD	UNIT 005, T1			
FPS-158	Ceramic	Stoneware	Food	Unknown		White	Sherd	SMALL SHERD	UNIT 005, T1			

<i>DBID</i>	<i>Category</i>	<i>Material</i>	<i>Function</i>	<i>Sub-function</i>	<i>Shape</i>	<i>Colour</i>	<i>Completeness</i>	<i>Description</i>	<i>Location</i>	<i>Inscription</i>	<i>Earliest and Latest Dates</i>	<i>Notes</i>
FPS-159	Ceramic	Stoneware	Food	Unknown		White	Sherd	SMALL SHERD	UNIT 005, T1			
FPS-160	Ceramic	Stoneware	Food	Unknown		White	Sherd	SMALL SHERD	UNIT 005, T1			
FPS-161	Ceramic	Stoneware	Food	Unknown		White	Sherd	SMALL SHERD	UNIT 005, T1			
FPS-162	Ceramic	Porcelain	Food	Plate		White	Sherd	RIM AND BASE, BLUE AND WHITE HAND PAINTED	UNIT 005, T1			
FPS-163	Ceramic	Porcelain	Food	Unknown		White	Sherd	RIM, GREEN WASH GLAZE	UNIT 005, T1			
FPS-164	Ceramic	Porcelain	Food	Unknown		White	Sherd	RIM, GREEN, PINK, GOLD, BLACK GEOMETRIC DECORATION	UNIT 005, T1			
FPS-165	Ceramic	Stoneware	Food	Unknown		White	Sherd	SMALL SHERD, WILLOW PATTERN	UNIT 005, T1			



<i>DBID</i>	<i>Category</i>	<i>Material</i>	<i>Function</i>	<i>Sub-function</i>	<i>Shape</i>	<i>Colour</i>	<i>Completeness</i>	<i>Description</i>	<i>Location</i>	<i>Inscription</i>	<i>Earliest and Latest Dates</i>	<i>Notes</i>
FPS-166	Ceramic	Stone-ware	Food	Unknown		White	Sherd	SMALL SHERD, WILLOW PATTERN	UNIT 005, T1			
FPS-167	Ceramic	Stone-ware	Food	Unknown		White	Sherd	SMALL SHERD, WILLOW PATTERN	UNIT 005, T1			
FPS-168	Ceramic	Stone-ware	Food	Unknown		White	Sherd	SMALL SHERD, WILLOW PATTERN	UNIT 005, T1			
FPS-169	Ceramic	Stone-ware	Food	Unknown		White	Sherd	SMALL SHERD, WILLOW PATTERN	UNIT 005, T1			
FPS-170	Ceramic	Stone-ware	Food	Unknown		White	Sherd	SMALL SHERD, WILLOW PATTERN	UNIT 005, T1			
FPS-171	Ceramic	Stone-ware	Food	Unknown		White	Sherd	SMALL SHERD, WILLOW PATTERN	UNIT 005, T1			
FPS-172	Ceramic	Stone-ware	Food	Unknown		White	Sherd	SMALL SHERD, WILLOW PATTERN	UNIT 005, T1			
FPS-173	Ceramic	Stone-ware	Food	Unknown		White	Sherd	SMALL SHERD	UNIT 005, T1			

<i>DBID</i>	<i>Category</i>	<i>Material</i>	<i>Function</i>	<i>Sub-function</i>	<i>Shape</i>	<i>Colour</i>	<i>Completeness</i>	<i>Description</i>	<i>Location</i>	<i>Inscription</i>	<i>Earliest and Latest Dates</i>	<i>Notes</i>
FPS-174	Ceramic	Stoneware	Food	Unknown		White	Sherd	SMALL SHERD	UNIT 005, T1			
FPS-175	Ceramic	Stoneware	Food	Unknown		White	Sherd	SMALL SHERD	UNIT 005, T1			
FPS-176	Ceramic	Stoneware	Food	Unknown		White	Sherd	SMALL SHERD	UNIT 005, T1			
FPS-177	Ceramic	Stoneware	Food	Unknown		White	Sherd	SMALL SHERD	UNIT 005, T1			
FPS-178	Ceramic	Stoneware	Food	Unknown		White	Sherd	SMALL SHERD	UNIT 005, T1			
FPS-179	Ceramic	Stoneware	Food	Unknown		White	Sherd	SMALL SHERD	UNIT 005, T1			
FPS-181	Ceramic	Stoneware	Food	Unknown		White	Sherd	SMALL SHERD	UNIT 005, T1			
FPS-182	Ceramic	Stoneware	Food	Unknown		White	Sherd	SMALL SHERD	UNIT 005, T1			
FPS-183	Ceramic	Stoneware	Food	Unknown		White	Sherd	SMALL SHERD	UNIT 005, T1			
FPS-184	Ceramic	Stoneware	Food	Unknown		White	Sherd	SMALL SHERD	UNIT 005, T1			
FPS-185	Ceramic	Stoneware	Food	Unknown		White	Sherd	SMALL SHERD	UNIT 005, T1			

<i>DBID</i>	<i>Category</i>	<i>Material</i>	<i>Function</i>	<i>Sub-function</i>	<i>Shape</i>	<i>Colour</i>	<i>Completeness</i>	<i>Description</i>	<i>Location</i>	<i>Inscription</i>	<i>Earliest and Latest Dates</i>	<i>Notes</i>
FPS-186	Ceramic	Stoneware	Food	Unknown		White	Sherd	SMALL SHERD	UNIT 005, T1			
FPS-187	Ceramic	Stoneware	Food	Unknown		Mustard	Sherd	RIM, MUSTARD PASTE AND GLAZE	UNIT 005, T1			
FPS-188	Ceramic	Ironstone	Food	Unknown		White	Sherd	SMMALL SHERDS	UNIT 005, T1			
FPS-189	Ceramic	Ironstone	Food	Unknown		White	Sherd	SMMALL SHERDS	UNIT 005, T1			
FPS-190	Ceramic	Ironstone	Food	Unknown		White	Sherd	SMMALL SHERDS	UNIT 005, T1			
FPS-191	Ceramic	Ironstone	Food	Unknown		White	Sherd	SMMALL SHERDS	UNIT 005, T1			
FPS-192	Ceramic	Earthenware	Domestic	Candle holders		White	Incomplete	FLOWER SHAPED TOP OF CANDLE HOLDER	UNIT 005, T1			
FPS-193	Ceramic	Terra-cotta	Hardware	Unknown		Orange	Sherd	BASE AND WALL OF POT PLANT?, BURNT	UNIT 005, T1			
FPS-194	Ceramic	Terra-cotta	Hardware	Unknown		Orange	Sherd	RIM SHERD	UNIT 005, T1			

<i>DBID</i>	<i>Category</i>	<i>Material</i>	<i>Function</i>	<i>Sub-function</i>	<i>Shape</i>	<i>Colour</i>	<i>Completeness</i>	<i>Description</i>	<i>Location</i>	<i>Inscription</i>	<i>Earliest and Latest Dates</i>	<i>Notes</i>
FPS-195	Ceramic	Terra-cotta	Hardware	Unknown		Orange	Sherd	RIM SHERD	UNIT 005, T1			
FPS-196	Ceramic	Terra-cotta	Hardware	Unknown		Orange	Sherd	RIM SHERD	UNIT 005, T1			
FPS-197	Ceramic	Terra-cotta	Hardware	Unknown		Orange	Sherd	SMALL SHERD	UNIT 005, T1			
FPS-198	Ceramic	Terra-cotta	Hardware	Unknown		Orange	Sherd	SMALL SHERD	UNIT 005, T1			
FPS-199	Ceramic	Terra-cotta	Hardware	Unknown		Orange	Sherd	SMALL SHERD	UNIT 005, T1			
FPS-200	Ceramic	Terra-cotta	Hardware	Unknown		Orange	Sherd	SMALL SHERD	UNIT 005, T1			
FPS-201	Ceramic	Terra-cotta	Hardware	Unknown		Orange	Sherd	SMALL SHERD	UNIT 005, T1			
FPS-202	Ceramic	Terra-cotta	Hardware	Unknown		Orange	Sherd	SMALL SHERD	UNIT 005, T1			
FPS-203	Ceramic	Terra-cotta	Hardware	Unknown		Orange	Sherd	SMALL SHERD	UNIT 005, T1			
FPS-204	Ceramic	Terra-cotta	Hardware	Unknown		Orange	Sherd	SMALL SHERD	UNIT 005, T1			
FPS-205	Ceramic	Terra-cotta	Hardware	Unknown		Orange	Sherd	SMALL SHERD	UNIT 005, T1			

<i>DBID</i>	<i>Category</i>	<i>Material</i>	<i>Function</i>	<i>Sub-function</i>	<i>Shape</i>	<i>Colour</i>	<i>Completeness</i>	<i>Description</i>	<i>Location</i>	<i>Inscription</i>	<i>Earliest and Latest Dates</i>	<i>Notes</i>
FPS-206	Ceramic	Terra-cotta	Hardware	Pipe		Orange	Sherd	HEAVY PIPE SHERD, BROWN GLAZE EXTERNAL AND INTERNAL	UNIT 005, T1			
FPS-207	Ceramic	Terra-cotta	Hardware	Pipe		Orange	Sherd	HEAVY PIPE SHERD EXTERANL ONLY, BROWN GLAZE	UNIT 005, T1			
FPS-208	Metal	SN	Food	Sardine Can	Rect-angular		Complete	RECTANGULAR SARDINE CAN WITH KEY, HEAVILY CORRODED	UNIT 005, T1		1890-present	
FPS-209	Metal	SN	Food	Sardine Can	Rect-angular		Complete	RECTANGULAR SARDINE CAN WITH KEY, HEAVILY CORRODED	UNIT 005, T1		1890-present	

<i>DBID</i>	<i>Category</i>	<i>Material</i>	<i>Function</i>	<i>Sub-function</i>	<i>Shape</i>	<i>Colour</i>	<i>Completeness</i>	<i>Description</i>	<i>Location</i>	<i>Inscription</i>	<i>Earliest and Latest Dates</i>	<i>Notes</i>
FPS-210	Metal	SN	Food	Meat tin key	Key		Incomplete	KEY WITH ROLLED METAL FROM OPEN CAN	UNIT 005, T1		1890-present	
FPS-211	Metal	SN	Food	Meat tin key	Key		Incomplete	KEY WITH ROLLED METAL FROM OPEN CAN	UNIT 005, T1		1890-present	
FPS-212	Metal	SN	Food	Tin can	Rectangular			RECTANGULAR CAN, HEAVILY CORRODED	UNIT 005, T1			
FPS-213	Metal	SN	Smoking	Tobacco can	Rectangular		Complete	LID INTACT, OPEN, CORRODED	UNIT 005, T1		1900-1950	
FPS-214	Metal	SN	Smoking	Tobacco can	Rectangular		Complete	LID INTACT, CORRODED SHUT	UNIT 005, T1		1900-1950	
FPS-215	Metal	SN	Food	Can	Rim		Incomplete	RIM OF RECTANGULAR CAN	UNIT 005, T1			
FPS-216	Metal	SN	Food	Can	Rim		Incomplete	RIM OF RECTANGULAR CAN	UNIT 005, T1			
FPS-217	Metal	SN	Food	Tin can	Rectangular		Incomplete	EDGE AND RIM OF RECTANGULAR CAN	UNIT 005, T1			

<i>DBID</i>	<i>Category</i>	<i>Material</i>	<i>Function</i>	<i>Sub-function</i>	<i>Shape</i>	<i>Colour</i>	<i>Completeness</i>	<i>Description</i>	<i>Location</i>	<i>Inscription</i>	<i>Earliest and Latest Dates</i>	<i>Notes</i>
FPS-218	Metal	SN	Food	Liquid tin	Cylinder		Complete	CLYNDRICAL CAN, ONE END OPENED TO REMOVE LIQUID, HAS SEAM BUT HEAVILY CORRODED	UNIT 005, T1			
FPS-219	Metal	SN	Alcohol	Bottle lid	Circular		Complete	CARLTON MID-STRENGTH BOTTLE CAP FOR CROWN SEAL	UNIT 005, T1		Earliest: C. 1995	
FPS-220	Metal	SN	Alcohol	Bottle lid	Circular		Complete	BOTTLE CAP FOR CROWN SEAL, CORRODED	UNIT 005, T1			
FPS-221	Metal	SN	Alcohol	Bottle lid	Circular		Complete	BOTTLE CAP FOR CROWN SEAL, CORRODED	UNIT 005, T1			
FPS-222	Metal	SN	Alcohol	Bottle lid	Circular		Complete	BOTTLE CAP FOR CROWN SEAL, CORRODED	UNIT 005, T1			

<i>DBID</i>	<i>Category</i>	<i>Material</i>	<i>Function</i>	<i>Sub-function</i>	<i>Shape</i>	<i>Colour</i>	<i>Completeness</i>	<i>Description</i>	<i>Location</i>	<i>Inscription</i>	<i>Earliest and Latest Dates</i>	<i>Notes</i>
FPS-223	Metal	FE	Hardware	Handle			Complete	HANDLE FOR DRESSER OR SIMILAR, CORRODED	UNIT 005, T1			
FPS-224	Metal	Tin	Alcohol	Beer can	Cylinder	White	Complete	EMU EXPORT BEER CAN, W/ RING PULL LID	UNIT 005, T1		1976-1985	
FPS-225	Metal	Tin	Alcohol	Beer can	Cylinder	White	Complete	EMU EXPORT BEER CAN, W/ RING PULL LID	UNIT 005, T1		1976-1985	
FPS-226	Metal	FE	Hardware	Door hinge			Complete	DOOR HINGE, BOTH SIDES OF HINGE INTACT	UNIT 005, T1			
FPS-227	Metal	CU	Hardware	Door hinge	Round		Complete	ROUND BALL HANDLE FOR DOOR, OR DRAWER OR SIMILAR	UNIT 005, T1			



<i>DBID</i>	<i>Category</i>	<i>Material</i>	<i>Function</i>	<i>Sub-function</i>	<i>Shape</i>	<i>Colour</i>	<i>Completeness</i>	<i>Description</i>	<i>Location</i>	<i>Inscription</i>	<i>Earliest and Latest Dates</i>	<i>Notes</i>
FPS-228	Metal	PB	Hardware	Washer	Circular		Complete	LEAD WASHER	UNIT 005, T1			
FPS-229	Metal	FE	Hardware	Key			Complete	DOOR KEY, REASONABLY MODERN	UNIT 005, T1			
FPS-230	Metal	SN	Alcohol	Bottle ring and pull			Complete	SWAN DRAUGHT RING PULL FOR BOTTLE	UNIT 005, T1			
FPS-231	Metal	SN	Personal	Broach pin			Incomplete	PIN FASTENER FOR BROACH	UNIT 005, T1			
FPS-232	Metal	PB	Hardware	Nail sleeve	Circular			SLEEVE FOR NAIL HEAD	UNIT 005, T1			
FPS-233	Metal	CU	Hardware	Electrical component			Incomplete	SOME FORM OF ELECTRICAL COMPONENT	UNIT 005, T1			
FPS-234	Metal	PB	Hardware	Handle			Incomplete	PARTIAL HANDLE FOR DRAWER OR SIMILAR	UNIT 005, T1			

<i>DBID</i>	<i>Category</i>	<i>Material</i>	<i>Function</i>	<i>Sub-function</i>	<i>Shape</i>	<i>Colour</i>	<i>Completeness</i>	<i>Description</i>	<i>Location</i>	<i>Inscription</i>	<i>Earliest and Latest Dates</i>	<i>Notes</i>
FPS-235	Bone	bone	Food	butchered			Incomplete	BUTCHERED BONE PELVIS	UNIT 005, T1			
FPS-236	Metal	CU	Hardware	Wire				VERY FINE WIRE	UNIT 005, T1			
FPS-237	Plastic	Bakelite	Personal	Toothbrush			Incomplete	TOOTHBRUSH WITHOUT BRISTLES	UNIT 005, T1			
FPS-238	Plastic	Plastic	Clothing	Button	Circular	Brown	Complete	4 HOLE PLASTIC BUTTON	UNIT 005, T1			diameter: 22.7mm
FPS-239	Shell	Pearl shell	Clothing	Button	Circular	Pearl white	Complete	2 HOLE PEARL SHELL BUTTON	UNIT 005, T1			diameter: 9.7mm
FPS-240	Plastic	Plastic	Alcohol	Wine bottle cork	Cylinder	Pink	Complete	SYNTHETIC CORK FOR WINE BOTTLE	UNIT 005, T1			
FPS-241	Metal	AL	Food	Milk bottle cap	Circular	Silver	Complete	MILK BOTTLE TOP	UNIT 005, T1			
FPS-242	Metal	AL	Food	Milk bottle cap	Circular	Silver	Incomplete	MILK BOTTLE TOP	UNIT 005, T1			
FPS-243	Metal	AL	Food	Milk bottle cap	Circular	Gold	Incomplete	MILK BOTTLE TOP	UNIT 005, T1			

<i>DBID</i>	<i>Category</i>	<i>Material</i>	<i>Function</i>	<i>Sub-function</i>	<i>Shape</i>	<i>Colour</i>	<i>Completeness</i>	<i>Description</i>	<i>Location</i>	<i>Inscription</i>	<i>Earliest and Latest Dates</i>	<i>Notes</i>
FPS-244	Metal	AL	Pharmaceutical	Pill packet		Gold	Incomplete	ALUMINIUM FOIL PACKING FOR PILLS	UNIT 005, T1	"CASTROGE L FM"		
FPS-245	Metal	FE	Hardware	Unknown				METAL SPOUT OR POSSIBLY PART OF A HANDLE? QUITE CORRODED	UNIT 005, T1			
FPS-246	Metal	Unknown	Unknown	Container	Cylinder		Incomplete	CORRODED SMALL METAL CONTAINER, FILLED WITH SOME FORM OF AGGLOMERATE	UNIT 005, T1			
FPS-247	Metal	FE	Hardware	Unknown	Cylinder		Incomplete	METAL SLEEVE (?) WITH INTERNAL NAILS, POSSIBLY PART OF A HEAD FOR A RAKE OR SIMILAR	UNIT 005, T1			

<i>DBID</i>	<i>Category</i>	<i>Material</i>	<i>Function</i>	<i>Sub-function</i>	<i>Shape</i>	<i>Colour</i>	<i>Completeness</i>	<i>Description</i>	<i>Location</i>	<i>Inscription</i>	<i>Earliest and Latest Dates</i>	<i>Notes</i>
FPS-248	Metal	SN	Hardware	Unknown	Ring		Incomplete	A RING WITH SMALL LOOP FOR HANGING, UNKNOWN FUNCTION	UNIT 005, T1			
FPS-249	Metal	SN	Hardware	Unknown	Strip			METAL BANDING I LONG STRIP, IRREGULAR SHAPE SO NOT BARREL BANDING	UNIT 005, T1			
FPS-250	Metal	PB(?)	Hardware	Unknown	Strip		Incomplete	TWO METAL STRIPS JOINED BY A RIVET	UNIT 005, T1			
FPS-251	Metal	FE	Hardware	Unknown	Strip		Incomplete	SMALL METAL STRIP WITH LOOP FOR NAIL	UNIT 005, T1			
FPS-252	Metal	FE	Hardware	Nail			Complete	WIRE NAIL, STEEL RHOMBOID, CORRODED	UNIT 005, T1		1880-1930	

<i>DBID</i>	<i>Category</i>	<i>Material</i>	<i>Function</i>	<i>Sub-function</i>	<i>Shape</i>	<i>Colour</i>	<i>Completeness</i>	<i>Description</i>	<i>Location</i>	<i>Inscription</i>	<i>Earliest and Latest Dates</i>	<i>Notes</i>
FPS-253	Metal	FE	Hardware	Nail			Complete	WIRE NAIL, STEEL RHOMBOID, CORRODED	UNIT 005, T1		1900-1930	
FPS-254	Metal	FE	Hardware	Nail			Complete	WIRE NAIL, STEEL RHOMBOID, CORRODED	UNIT 005, T1		1890-1900	
FPS-255	Metal	FE	Hardware	Nail			Complete	WIRE NAIL, STEEL RHOMBOID, 2 BRACKETS UNDER HEAD, CORRODED	UNIT 005, T1		1895-1899	
FPS-255	Metal	FE	Hardware	Nail			Complete	WIRE NAIL HEAVILY CORRODED, DIAGNOSTIC FEATURES OBSCURED	UNIT 005, T1			
FPS-256	Metal	FE	Hardware	Nail			Complete	WIRE NAIL HEAVILY CORRODED, DIAGNOSTIC FEATURES OBSCURED	UNIT 005, T1			

<i>DBID</i>	<i>Category</i>	<i>Material</i>	<i>Function</i>	<i>Sub-function</i>	<i>Shape</i>	<i>Colour</i>	<i>Completeness</i>	<i>Description</i>	<i>Location</i>	<i>Inscription</i>	<i>Earliest and Latest Dates</i>	<i>Notes</i>
FPS-257	Metal	FE	Hardware	Nail			Complete	WIRE NAIL HEAVILY CORRODED, DIAGNOSTIC FEATURES OBSCURED	UNIT 005, T1			
FPS-258	Metal	FE	Hardware	Nail			Complete	WIRE NAIL HEAVILY CORRODED, DIAGNOSTIC FEATURES OBSCURED	UNIT 005, T1			
FPS-259	Metal	FE	Hardware	Nail			Complete	WIRE NAIL HEAVILY CORRODED, DIAGNOSTIC FEATURES OBSCURED	UNIT 005, T1			
FPS-260	Metal	FE	Hardware	Nail			Complete	WIRE NAIL HEAVILY CORRODED, DIAGNOSTIC FEATURES OBSCURED	UNIT 005, T1			

<i>DBID</i>	<i>Category</i>	<i>Material</i>	<i>Function</i>	<i>Sub-function</i>	<i>Shape</i>	<i>Colour</i>	<i>Completeness</i>	<i>Description</i>	<i>Location</i>	<i>Inscription</i>	<i>Earliest and Latest Dates</i>	<i>Notes</i>
FPS-261	Metal	FE	Hardware	Nail			Complete	WIRE NAIL HEAVILY CORRODED, DIAGNOSTIC FEATURES OBSCURED	UNIT 005, T1			
FPS-262	Metal	FE	Hardware	Nail			Complete	WIRE NAIL HEAVILY CORRODED, DIAGNOSTIC FEATURES OBSCURED	UNIT 005, T1			
FPS-263	Metal	FE	Hardware	Nail			Complete	WIRE NAIL HEAVILY CORRODED, DIAGNOSTIC FEATURES OBSCURED	UNIT 005, T1			
FPS-264	Metal	FE	Hardware	Nail			Complete	WIRE NAIL HEAVILY CORRODED, DIAGNOSTIC FEATURES OBSCURED	UNIT 005, T1			

<i>DBID</i>	<i>Category</i>	<i>Material</i>	<i>Function</i>	<i>Sub-function</i>	<i>Shape</i>	<i>Colour</i>	<i>Completeness</i>	<i>Description</i>	<i>Location</i>	<i>Inscription</i>	<i>Earliest and Latest Dates</i>	<i>Notes</i>
FPS-265	Metal	FE	Hardware	Nail			Complete	WIRE NAIL HEAVILY CORRODED, DIAGNOSTIC FEATURES OBSCURED	UNIT 005, T1			
FPS-266	Metal	FE	Hardware	Nail			Complete	WIRE NAIL HEAVILY CORRODED, DIAGNOSTIC FEATURES OBSCURED	UNIT 005, T1			
FPS-267	Metal	FE	Hardware	Nail			Complete	WIRE NAIL, 20TH CENTURY, POST 1940	UNIT 005, T1		1940-present	
FPS-268	Metal	FE	Hardware	Nail			Complete	WIRE NAIL, 20TH CENTURY, POST 1940	UNIT 005, T1		1940-present	
FPS-269	Metal	FE	Hardware	Nail			Complete	WIRE NAIL, 20TH CENTURY, POST 1940	UNIT 005, T1		1940-present	
FPS-270	Metal	FE	Hardware	Nail			Complete	WIRE NAIL, 20TH CENTURY, POST 1940	UNIT 005, T1		1940-present	



<i>DBID</i>	<i>Category</i>	<i>Material</i>	<i>Function</i>	<i>Sub-function</i>	<i>Shape</i>	<i>Colour</i>	<i>Completeness</i>	<i>Description</i>	<i>Location</i>	<i>Inscription</i>	<i>Earliest and Latest Dates</i>	<i>Notes</i>
FPS-271	Metal	FE	Hardware	Nail			Complete	WIRE NAIL, 20TH CENTURY, POST 1940	UNIT 005, T1		1940-present	
FPS-272	Metal	FE	Hardware	Nail			Complete	WIRE NAIL, 20TH CENTURY, POST 1940	UNIT 005, T1		1940-present	
FPS-273	Metal	FE	Hardware	Nail			Complete	WIRE NAIL, 20TH CENTURY, POST 1940	UNIT 005, T1		1940-present	
FPS-274	Metal	FE	Hardware	Nail			Incomplete	WIRE NAIL PART, HEAVILY CORRODED	UNIT 005, T1			
FPS-275	Metal	FE	Hardware	Nail			Incomplete	WIRE NAIL PART, HEAVILY CORRODED	UNIT 005, T1			
FPS-276	Metal	FE	Hardware	Nail			Incomplete	WIRE NAIL PART, HEAVILY CORRODED	UNIT 005, T1			
FPS-277	Metal	FE	Hardware	Nail			Complete	U-SHAPED TACK NAIL	UNIT 005, T1			
FPS-278	Metal	FE	Hardware	Wire			Incomplete	LENGTH WIRE, CORRODED	UNIT 005, T1			

<i>DBID</i>	<i>Category</i>	<i>Material</i>	<i>Function</i>	<i>Sub-function</i>	<i>Shape</i>	<i>Colour</i>	<i>Completeness</i>	<i>Description</i>	<i>Location</i>	<i>Inscription</i>	<i>Earliest and Latest Dates</i>	<i>Notes</i>
FPS-279	Metal	FE	Hardware	Wire			Incomplete	LENGTH WIRE, CORRODED	UNIT 005, T1			
FPS-280	Metal	FE	Hardware	Wire			Incomplete	LENGTH WIRE, CORRODED	UNIT 005, T1			
FPS-281	Rubber		Recreation	Ball			Incomplete	RUBBER SKIN OF BASKETBALL OR SIMILAR	UNIT 005, T1			
FPS-282	Rubber		Recreation	Ball			Incomplete	RUBBER SKIN OF BASKETBALL OR SIMILAR	UNIT 005, T1			
FPS-283	Rubber		Recreation	Ball			Incomplete	RUBBER SKIN OF BASKETBALL OR SIMILAR	UNIT 005, T1			
FPS-284	Rubber		Recreation	Ball			Incomplete	RUBBER SKIN OF BASKETBALL OR SIMILAR	UNIT 005, T1			
FPS-285	Rubber		Recreation	Ball			Incomplete	RUBBER SKIN OF BASKETBALL OR SIMILAR	UNIT 005, T1			

<i>DBID</i>	<i>Category</i>	<i>Material</i>	<i>Function</i>	<i>Sub-function</i>	<i>Shape</i>	<i>Colour</i>	<i>Completeness</i>	<i>Description</i>	<i>Location</i>	<i>Inscription</i>	<i>Earliest and Latest Dates</i>	<i>Notes</i>
FPS-286	Rubber		Recreation	Ball			Incomplete	RUBBER SKIN OF BASKETBALL OR SIMILAR	UNIT 005, T1			
FPS-287	Rubber		Recreation	Ball			Incomplete	RUBBER SKIN OF BASKETBALL OR SIMILAR	UNIT 005, T1			
FPS-288	Metal	PB(?)	Personal	Jewellery			Incomplete	POSSIBLE BROACH OR SIMILAR. SHAPED LIKE A BEETLE CARAPACE W/ INTERNAL CURLICUE DECORATION	UNIT 005, T1			
FPS-289	Metal	AL (?)	Personal	Jewellery			Incomplete	CLASP FOR HAIR CLIP OR SIMILAR	UNIT 005, T1			
FPS-290	Metal	AL	Unknown	Unknown			Incomplete	MELTED SLAG	UNIT 005, T1			

<i>DBID</i>	<i>Category</i>	<i>Material</i>	<i>Function</i>	<i>Sub-function</i>	<i>Shape</i>	<i>Colour</i>	<i>Completeness</i>	<i>Description</i>	<i>Location</i>	<i>Inscription</i>	<i>Earliest and Latest Dates</i>	<i>Notes</i>
FPS-291	Metal	SN	Hardware	Unknown			Incomplete	TRIANGULAR PICE CUT TIN	UNIT 005, T1			
FPS-292	Metal	SN	Hardware	Unknown			Fragment	FRAGMENT OF SHEET TIN, NO DIAGNOSTIC FEATURES	UNIT 005, T1			
FPS-293	Metal	SN	Hardware	Unknown			Fragment	FRAGMENT OF SHEET TIN, NO DIAGNOSTIC FEATURES	UNIT 005, T1			
FPS-294	Metal	SN	Hardware	Unknown			Fragment	FRAGMENT OF SHEET TIN, NO DIAGNOSTIC FEATURES	UNIT 005, T1			
FPS-295	Metal	SN	Hardware	Unknown			Fragment	FRAGMENT OF SHEET TIN, NO DIAGNOSTIC FEATURES	UNIT 005, T1			

<i>DBID</i>	<i>Category</i>	<i>Material</i>	<i>Function</i>	<i>Sub-function</i>	<i>Shape</i>	<i>Colour</i>	<i>Completeness</i>	<i>Description</i>	<i>Location</i>	<i>Inscription</i>	<i>Earliest and Latest Dates</i>	<i>Notes</i>
FPS-296	Metal	SN	Hardware	Unknown			Fragment	FRAGMENT OF SHEET TIN, NO DIAGNOSTIC FEATURES	UNIT 005, T1			
FPS-297	Metal	SN	Hardware	Unknown			Fragment	FRAGMENT OF SHEET TIN, NO DIAGNOSTIC FEATURES	UNIT 005, T1			
FPS-298	Metal	FE	Hardware	Unknown			Fragment	FRAGMENT OF CORRODED SHEET METAL	UNIT 005, T1			
FPS-299	Metal	FE	Hardware	Unknown			Fragment	FRAGMENT OF CORRODED SHEET METAL	UNIT 005, T1			
FPS-300	Metal	FE	Hardware	Unknown			Fragment	FRAGMENT OF CORRODED SHEET METAL	UNIT 005, T1			
FPS-301	Metal	FE	Hardware	Unknown			Fragment	FRAGMENT OF CORRODED SHEET METAL	UNIT 005, T1			

<i>DBID</i>	<i>Category</i>	<i>Material</i>	<i>Function</i>	<i>Sub-function</i>	<i>Shape</i>	<i>Colour</i>	<i>Completeness</i>	<i>Description</i>	<i>Location</i>	<i>Inscription</i>	<i>Earliest and Latest Dates</i>	<i>Notes</i>
FPS-302	Metal	FE	Hardware	Unknown			Fragment	FRAGMENT OF CORRODED SHEET METAL	UNIT 005, T1			
FPS-303	Metal	FE	Hardware	Unknown			Fragment	FRAGMENT OF CORRODED SHEET METAL	UNIT 005, T1			
FPS-304	Metal	FE	Hardware	Unknown			Fragment	FRAGMENT OF CORRODED SHEET METAL	UNIT 005, T1			
FPS-305	Metal	FE	Hardware	Unknown			Fragment	FRAGMENT OF CORRODED SHEET METAL	UNIT 005, T1			
FPS-306	Metal	FE	Hardware	Unknown			Fragment	FRAGMENT OF CORRODED SHEET METAL	UNIT 005, T1			
FPS-307	Metal	FE	Hardware	Unknown			Fragment	FRAGMENT OF CORRODED SHEET METAL	UNIT 005, T1			

<i>DBID</i>	<i>Category</i>	<i>Material</i>	<i>Function</i>	<i>Sub-function</i>	<i>Shape</i>	<i>Colour</i>	<i>Completeness</i>	<i>Description</i>	<i>Location</i>	<i>Inscription</i>	<i>Earliest and Latest Dates</i>	<i>Notes</i>
FPS-308	Metal	FE	Hardware	Unknown			Fragment	FRAGMENT OF CORRODED SHEET METAL	UNIT 005, T1			
FPS-309	Metal	FE	Hardware	Unknown			Fragment	FRAGMENT OF CORRODED SHEET METAL	UNIT 005, T1			
FPS-310	Metal	FE	Hardware	Unknown			Fragment	FRAGMENT OF CORRODED SHEET METAL	UNIT 005, T1			
FPS-311	Metal	FE	Hardware	Unknown			Fragment	FRAGMENT OF CORRODED SHEET METAL	UNIT 005, T1			
FPS-312	Metal	FE	Hardware	Unknown			Fragment	FRAGMENT OF CORRODED SHEET METAL	UNIT 005, T1			
FPS-313	Metal	FE	Hardware	Unknown			Fragment	FRAGMENT OF CORRODED SHEET METAL	UNIT 005, T1			

<i>DBID</i>	<i>Category</i>	<i>Material</i>	<i>Function</i>	<i>Sub-function</i>	<i>Shape</i>	<i>Colour</i>	<i>Completeness</i>	<i>Description</i>	<i>Location</i>	<i>Inscription</i>	<i>Earliest and Latest Dates</i>	<i>Notes</i>
FPS-314	Metal	FE	Hardware	Unknown			Fragment	FRAGMENT OF CORRODED SHEET METAL	UNIT 005, T1			
FPS-315	Metal	FE	Hardware	Unknown			Fragment	FRAGMENT OF CORRODED SHEET METAL	UNIT 005, T1			
FPS-316	Metal	FE	Hardware	Unknown			Fragment	FRAGMENT OF CORRODED SHEET METAL	UNIT 005, T1			
FPS-317	Metal	FE	Hardware	Unknown			Fragment	FRAGMENT OF CORRODED SHEET METAL	UNIT 005, T1			
FPS-318	Metal	FE	Hardware	Unknown			Fragment	FRAGMENT OF CORRODED SHEET METAL	UNIT 005, T1			
FPS-319	Metal	FE	Hardware	Unknown			Fragment	FRAGMENT OF CORRODED SHEET METAL	UNIT 005, T1			



<i>DBID</i>	<i>Category</i>	<i>Material</i>	<i>Function</i>	<i>Sub-function</i>	<i>Shape</i>	<i>Colour</i>	<i>Completeness</i>	<i>Description</i>	<i>Location</i>	<i>Inscription</i>	<i>Earliest and Latest Dates</i>	<i>Notes</i>
FPS-320	Metal	FE	Hardware	Unknown			Fragment	FRAGMENT OF CORRODED SHEET METAL	UNIT 005, T1			
FPS-321	Metal	FE	Hardware	Unknown			Fragment	FRAGMENT OF CORRODED SHEET METAL	UNIT 005, T1			
FPS-322	Metal	FE	Hardware	Unknown			Fragment	FRAGMENT OF CORRODED SHEET METAL	UNIT 005, T1			
FPS-323	Metal	FE	Hardware	Unknown			Fragment	FRAGMENT OF CORRODED SHEET METAL	UNIT 005, T1			
FPS-324	Metal	FE	Hardware	Unknown			Fragment	FRAGMENT OF CORRODED SHEET METAL	UNIT 005, T1			
FPS-325	Metal	FE	Hardware	Unknown			Fragment	FRAGMENT OF CORRODED SHEET METAL	UNIT 005, T1			

<i>DBID</i>	<i>Category</i>	<i>Material</i>	<i>Function</i>	<i>Sub-function</i>	<i>Shape</i>	<i>Colour</i>	<i>Completeness</i>	<i>Description</i>	<i>Location</i>	<i>Inscription</i>	<i>Earliest and Latest Dates</i>	<i>Notes</i>
FPS-326	Metal	FE	Hardware	Unknown			Fragment	FRAGMENT OF CORRODED SHEET METAL	UNIT 005, T1			
FPS-327	Metal	FE	Hardware	Unknown			Fragment	FRAGMENT OF CORRODED SHEET METAL	UNIT 005, T1			
FPS-328	Metal	FE	Hardware	Unknown			Fragment	FRAGMENT OF CORRODED SHEET METAL	UNIT 005, T1			
FPS-329	Metal	FE	Hardware	Unknown			Fragment	FRAGMENT OF CORRODED SHEET METAL	UNIT 005, T1			
FPS-330	Metal	FE	Hardware	Unknown			Fragment	FRAGMENT OF CORRODED SHEET METAL	UNIT 005, T1			
FPS-331	Metal	FE	Hardware	Unknown			Fragment	FRAGMENT OF CORRODED SHEET METAL	UNIT 005, T1			

<i>DBID</i>	<i>Category</i>	<i>Material</i>	<i>Function</i>	<i>Sub-function</i>	<i>Shape</i>	<i>Colour</i>	<i>Completeness</i>	<i>Description</i>	<i>Location</i>	<i>Inscription</i>	<i>Earliest and Latest Dates</i>	<i>Notes</i>
FPS-332	Metal	FE	Hardware	Unknown			Fragment	FRAGMENT OF CORRODED SHEET METAL	UNIT 005, T1			
FPS-333	Metal	FE	Hardware	Unknown			Fragment	FRAGMENT OF CORRODED SHEET METAL	UNIT 005, T1			
FPS-334	Metal	FE	Hardware	Unknown			Fragment	FRAGMENT OF CORRODED SHEET METAL	UNIT 005, T1			
FPS-335	Metal	FE	Hardware	Unknown			Fragment	FRAGMENT OF CORRODED SHEET METAL	UNIT 005, T1			
FPS-336	Metal	FE	Hardware	Unknown			Fragment	FRAGMENT OF CORRODED SHEET METAL	UNIT 005, T1			
FPS-337	Metal	FE	Hardware	Unknown			Fragment	FRAGMENT OF CORRODED SHEET METAL	UNIT 005, T1			

<i>DBID</i>	<i>Category</i>	<i>Material</i>	<i>Function</i>	<i>Sub-function</i>	<i>Shape</i>	<i>Colour</i>	<i>Completeness</i>	<i>Description</i>	<i>Location</i>	<i>Inscription</i>	<i>Earliest and Latest Dates</i>	<i>Notes</i>
FPS-338	Metal	FE	Hardware	Unknown			Fragment	FRAGMENT OF CORRODED SHEET METAL	UNIT 005, T1			
FPS-339	Metal	FE	Hardware	Unknown			Fragment	FRAGMENT OF CORRODED SHEET METAL	UNIT 005, T1			
FPS-340	Metal	FE	Hardware	Unknown			Fragment	FRAGMENT OF CORRODED SHEET METAL	UNIT 005, T1			
FPS-341	Metal	FE	Hardware	Unknown			Fragment	FRAGMENT OF CORRODED SHEET METAL	UNIT 005, T1			
FPS-342	Metal	FE	Hardware	Unknown			Fragment	FRAGMENT OF CORRODED SHEET METAL	UNIT 005, T1			
FPS-343	Metal	FE	Hardware	Unknown			Fragment	FRAGMENT OF CORRODED SHEET METAL	UNIT 005, T1			

<i>DBID</i>	<i>Category</i>	<i>Material</i>	<i>Function</i>	<i>Sub-function</i>	<i>Shape</i>	<i>Colour</i>	<i>Completeness</i>	<i>Description</i>	<i>Location</i>	<i>Inscription</i>	<i>Earliest and Latest Dates</i>	<i>Notes</i>
FPS-344	Metal	FE	Hardware	Unknown			Fragment	FRAGMENT OF CORRODED SHEET METAL	UNIT 005, T1			
FPS-345	Metal	FE	Hardware	Unknown			Fragment	FRAGMENT OF CORRODED SHEET METAL	UNIT 005, T1			
FPS-346	Metal	FE	Hardware	Unknown			Fragment	FRAGMENT OF CORRODED SHEET METAL	UNIT 005, T1			
FPS-347	Metal	FE	Hardware	Unknown			Fragment	FRAGMENT OF CORRODED SHEET METAL	UNIT 005, T1			
FPS-348	Metal	FE	Hardware	Unknown			Fragment	FRAGMENT OF CORRODED SHEET METAL	UNIT 005, T1			
FPS-349	Metal	FE	Hardware	Unknown			Fragment	FRAGMENT OF CORRODED SHEET METAL	UNIT 005, T1			

<i>DBID</i>	<i>Category</i>	<i>Material</i>	<i>Function</i>	<i>Sub-function</i>	<i>Shape</i>	<i>Colour</i>	<i>Completeness</i>	<i>Description</i>	<i>Location</i>	<i>Inscription</i>	<i>Earliest and Latest Dates</i>	<i>Notes</i>
FPS-350	Metal	FE	Hardware	Unknown			Fragment	FRAGMENT OF CORRODED SHEET METAL	UNIT 005, T1			
FPS-351	Plastic	Plastic	Food	Milk carton			Incomplete	PLASTIC OUTER SKIN OF MILK CARTON	UNIT 005, T1			
FPS-352	Cloth	Lace	Hardware	Curtain			Incomplete	PART OF LACE CURTAIN	UNIT 005, T1			may have been reused - has been cut to a strip
FPS-353	Shell	Oyster Shell	Food	Unknown			Incomplete	PIECE OF OYSTER SHELL	UNIT 005, T1			
FPS-354	Shell	Oyster Shell	Food	Unknown			Incomplete	PIECE OF OYSTER SHELL	UNIT 005, T1			
FPS-355	Shell	Oyster Shell	Food	Unknown			Incomplete	PIECE OF OYSTER SHELL	UNIT 005, T1			
FPS-356	Shell	Oyster Shell	Food	Unknown			Incomplete	PIECE OF OYSTER SHELL	UNIT 005, T1			
FPS-357	Shell	Oyster Shell	Food	Unknown			Incomplete	PIECE OF OYSTER SHELL	UNIT 005, T1			

<i>DBID</i>	<i>Category</i>	<i>Material</i>	<i>Function</i>	<i>Sub-function</i>	<i>Shape</i>	<i>Colour</i>	<i>Completeness</i>	<i>Description</i>	<i>Location</i>	<i>Inscription</i>	<i>Earliest and Latest Dates</i>	<i>Notes</i>
FPS-358	Shell	Cowrie shell	Unknown	Unknown			Complete	COMPLETE COWRIE SHELL	UNIT 005, T1			
FPS-359	Shell	Unknown	Unknown	Unknown			Incomplete	SMALL SHELL FRAGMENTS, INDETERMINATE SPECIES	UNIT 005, T1			
FPS-360	Shell	Unknown	Unknown	Unknown			Incomplete	SMALL SHELL FRAGMENTS, INDETERMINATE SPECIES	UNIT 005, T1			
FPS-361	Shell	Unknown	Unknown	Unknown			Incomplete	SMALL SHELL FRAGMENTS, INDETERMINATE SPECIES	UNIT 005, T1			
FPS-362	Shell	Unknown	Unknown	Unknown			Incomplete	SMALL SHELL FRAGMENTS, INDETERMINATE SPECIES	UNIT 005, T1			

<i>DBID</i>	<i>Category</i>	<i>Material</i>	<i>Function</i>	<i>Sub-function</i>	<i>Shape</i>	<i>Colour</i>	<i>Completeness</i>	<i>Description</i>	<i>Location</i>	<i>Inscription</i>	<i>Earliest and Latest Dates</i>	<i>Notes</i>
FPS-363	Shell	Unknown	Unknown	Unknown			Incomplete	SMALL SHELL FRAGMENTS, INDETERMINATE SPECIES	UNIT 005, T1			
FPS-364	Shell	Unknown	Unknown	Unknown			Incomplete	SMALL SHELL FRAGMENTS, INDETERMINATE SPECIES	UNIT 005, T1			
FPS-365	Plastic	Unknown	Unknown	Unknown		Blue	Incomplete	SMALL FRAGMENT PLASTIC	UNIT 005, T1			
FPS-366	Wood	Jarrah	Unknown	Unknown			Incomplete	SMALL PIECE CUT TIMBER	UNIT 005, T1			
FPS-366	Wood	Unknown	Unknown	Unknown			Incomplete	FROND FOR ZAMIA OR XANTHORHEA	UNIT 005, T1			
FPS-367	Fossil	Limestone	Unknown	Fossil			Incomplete	FOSSILISED TUBE WORM	UNIT 005, T1			
FPS-368	Wood	Jarrah	Unknown	Unknown			Fragment	SMALL FRAGMENT CUT TIMBER	UNIT 005, T1			



<i>DBID</i>	<i>Category</i>	<i>Material</i>	<i>Function</i>	<i>Sub-function</i>	<i>Shape</i>	<i>Colour</i>	<i>Completeness</i>	<i>Description</i>	<i>Location</i>	<i>Inscription</i>	<i>Earliest and Latest Dates</i>	<i>Notes</i>
FPS-369	Metal	FE	Armament	Shrapnel bomb	Sphere		Incomplete	SPECIALISED CASE SHOT SHRAPNEL BOMB, HOLLOW SPHERE, W/ SMALL BAG INTERIOR RUST FLAKES	UNIT 005, T1		Earliest: 1825	Mass: 3300g, diameter: 110mm
FPS-370	Metal	FE	Armament	Shrapnel bomb	Sphere		Incomplete	SPECIALISED CASE SHOT SHRAPNEL BOMB, HOLLOW SPHERE, INTERIOR FILLED WITH AGGLOMERATE (POSSIBLE ORIGINAL FILLING)	UNIT 005, T1		Earliest: 1825	Mass: 3300g, diameter: 110mm

<i>DBID</i>	<i>Category</i>	<i>Material</i>	<i>Function</i>	<i>Sub-function</i>	<i>Shape</i>	<i>Colour</i>	<i>Completeness</i>	<i>Description</i>	<i>Location</i>	<i>Inscription</i>	<i>Earliest and Latest Dates</i>	<i>Notes</i>
FPS-371	Metal	FE	Armament	Shrapnel bomb	Sphere		Incomplete	SPECIALISED CASE SHOT SHRAPNEL BOMB, HOLLOW SPHERE,	UNIT 005, T1		Earliest: 1825	Mass: 3300g, diameter: 110mm
FPS-372	Metal	FE	Armament	Shrapnel bomb	Sphere		Incomplete	SPECIALISED CASE SHOT SHRAPNEL BOMB, HOLLOW SPHERE,	UNIT 005, T1		Earliest: 1825	Mass: 3300g, diameter: 110mm
FPS-373	Metal	FE	Hardware	Sign?	Arrow		Complete	METAL SIGN OR SIMILAR, WILL HOLE AT POINTY END	UNIT 005, T1			max. height: 350mm, max. width: 134mm
FPS-374	Glass	Glass	Hardware	Window glass		Clear	Fragment	PIECE WINDOW GLASS	UNIT 005, T1		Earliest: 1840	max. height: 3.5mm
FPS-375	Glass	Glass	Hardware	Window glass		Clear	Fragment	PIECE WINDOW GLASS	UNIT 005, T1		Latest: 1870	max. height: 2.7mm
FPS-376	Glass	Glass	Pharmaceutical	Bottle glass		Cobalt blue	Fragment	TINY FRAGMENT BLUE GLASS	UNIT 005, T1		Earliest: 1845	

<i>DBID</i>	<i>Category</i>	<i>Material</i>	<i>Function</i>	<i>Sub-function</i>	<i>Shape</i>	<i>Colour</i>	<i>Completeness</i>	<i>Description</i>	<i>Location</i>	<i>Inscription</i>	<i>Earliest and Latest Dates</i>	<i>Notes</i>
FPS-377	Glass	Glass	Pharmaceutical	Bottle glass		Cobalt blue	Fragment	TINY FRAGMENT BLUE GLASS	UNIT 005, T1		Earliest: 1845	
FPS-378	Glass	Glass	Food	Bottle glass		Clear	Fragment	WALL AND SHOULDER OF CODD BOTTLE	UNIT 005, T1		1873-1935	
FPS-379	Glass	Glass	Food	Bottle stopper		Clear	Complete	COMPLETE BOTTLE STOPPER, WOULD HAVE PREVIOUSLY HAD CORK ATTACHED, FOR WORCESTER SAUCE	UNIT 005, T1	"LEA & PERRIN"	Earliest: 1875	
FPS-380	Glass	Glass	Food	Bottle glass		Clear	Fragment	RIM AND WALL OF WIDE MOUTH JAR	UNIT 005, T1			

<i>DBID</i>	<i>Category</i>	<i>Material</i>	<i>Function</i>	<i>Sub-function</i>	<i>Shape</i>	<i>Colour</i>	<i>Completeness</i>	<i>Description</i>	<i>Location</i>	<i>Inscription</i>	<i>Earliest and Latest Dates</i>	<i>Notes</i>
FPS-381	Glass	Glass	Alcohol	Bottle glass		Olive	Fragment	BOTTLE COLLAR, SINGLE COLLAR RING SEAL, POSSIBLY FOR CHAMPAGNE BOTTLE	UNIT 005, T1		Latest: 1920	
FPS-382	Glass	Glass	Pharmaceutical	Bottle glass		Clear	Fragment	BOTTLE COLLAR, PRESCRIPTION LIP FOR MEDICINE BOTTLE	UNIT 005, T1		1890-1920	
FPS-383	Glass	Glass	Pharmaceutical	Bottle glass		Clear	Fragment	BOTTLE COLLAR, PRESCRIPTION LIP FOR MEDICINE BOTTLE	UNIT 005, T1		1890-1920	
FPS-384	Glass	Glass	Pharmaceutical	Bottle glass		Clear	Fragment	COLLAR NECK AND SHOULDER OF MEDICINE BOTTLE	UNIT 005, T1			
FPS-385	Glass	Glass	Unknown	Bottle glass		Amethyst	Fragment	FRAGMENT AMYTHEST BOTTLE GLASS	UNIT 005, T1		1890-1916	

<i>DBID</i>	<i>Category</i>	<i>Material</i>	<i>Function</i>	<i>Sub-function</i>	<i>Shape</i>	<i>Colour</i>	<i>Completeness</i>	<i>Description</i>	<i>Location</i>	<i>Inscription</i>	<i>Earliest and Latest Dates</i>	<i>Notes</i>
FPS-386	Glass	Glass	Unknown	Bottle glass		Amethyst	Fragment	FRAGMENT AMYTHEST BOTTLE GLASS	UNIT 005, T1		1890-1916	
FPS-387	Glass	Glass	Alcohol	Bottle glass		Olive	Fragment	BOTTLE COLLAR, SINGLE COLLAR RING SEAL	UNIT 005, T1			
FPS-388	Glass	Glass	Unknown	Bottle glass		Clear	Fragment	KICK UP FOR CLEAR GLASS BOTTLE, VERY FINE GLASS, NO PONTIL	UNIT 005, T1	"M"		Inscription possibly refers to "Mould W.G.H."
FPS-389	Glass	Glass	Alcohol	Bottle glass		Clear	Fragment	WALL, FROM FLAT OCTAGONAL SHAPED BOTTLE (GIN?)	UNIT 005, T1	PARTIAL "..KM... SY..."		
FPS-390	Glass	Glass	Alcohol	Bottle glass		Olive	Fragment	CURVED WALL FRAGMENT W/ INSCRIPTION	UNIT 005, T1	PARTIAL "...P &... C...."		

<i>DBID</i>	<i>Category</i>	<i>Material</i>	<i>Function</i>	<i>Sub-function</i>	<i>Shape</i>	<i>Colour</i>	<i>Completeness</i>	<i>Description</i>	<i>Location</i>	<i>Inscription</i>	<i>Earliest and Latest Dates</i>	<i>Notes</i>
FPS-391	Glass	Glass	Alcohol	Bottle glass		Olive	Fragment	NECK FRAGMENT ALCOHOL BOTTLE, HEAVILY OXIDISED	UNIT 005, T1			
FPS-392	Glass	Glass	Alcohol	Bottle glass		Olive	Fragment	NECK FRAGMENT ALCOHOL BOTTLE, HEAVILY OXIDISED	UNIT 005, T1			
FPS-393	Glass	Glass	Unknown	Unknown		Clear	Fragment	FLAT GLASS FRAGMENT	UNIT 005, T1			
FPS-394	Glass	Glass	Unknown	Unknown		Clear	Fragment	FLAT GLASS FRAGMENT	UNIT 005, T1			
FPS-395	Glass	Glass	Unknown	Unknown		Clear	Fragment	FLAT GLASS FRAGMENT	UNIT 005, T1			
FPS-396	Glass	Glass	Unknown	Unknown		Clear	Fragment	FLAT GLASS FRAGMENT	UNIT 005, T1			
FPS-397	Glass	Glass	Unknown	Unknown		Clear	Fragment	FLAT GLASS FRAGMENT	UNIT 005, T1			
FPS-398	Glass	Glass	Unknown	Unknown		Clear	Fragment	FLAT GLASS FRAGMENT	UNIT 005, T1			

<i>DBID</i>	<i>Category</i>	<i>Material</i>	<i>Function</i>	<i>Sub-function</i>	<i>Shape</i>	<i>Colour</i>	<i>Completeness</i>	<i>Description</i>	<i>Location</i>	<i>Inscription</i>	<i>Earliest and Latest Dates</i>	<i>Notes</i>
FPS-399	Glass	Glass	Unknown	Unknown		Clear	Fragment	FLAT GLASS FRAGMENT	UNIT 005, T1			
FPS-400	Glass	Glass	Unknown	Unknown		Clear	Fragment	FLAT GLASS FRAGMENT	UNIT 005, T1			
FPS-401	Glass	Glass	Alcohol	Bottle glass		Olive	Fragment	OLIVE GLASS FRAGMENT	UNIT 005, T1			
FPS-402	Glass	Glass	Alcohol	Bottle glass		Olive	Fragment	OLIVE GLASS FRAGMENT	UNIT 005, T1			
FPS-403	Glass	Glass	Alcohol	Bottle glass		Olive	Fragment	OLIVE GLASS FRAGMENT	UNIT 005, T1			
FPS-404	Glass	Glass	Alcohol	Bottle glass		Olive	Fragment	OLIVE GLASS FRAGMENT	UNIT 005, T1			
FPS-405	Glass	Glass	Alcohol	Bottle glass		Olive	Fragment	OLIVE GLASS FRAGMENT	UNIT 005, T1			
FPS-406	Glass	Glass	Alcohol	Bottle glass		Olive	Fragment	OLIVE GLASS FRAGMENT	UNIT 005, T1			
FPS-407	Glass	Glass	Alcohol	Bottle glass		Olive	Fragment	OLIVE GLASS FRAGMENT	UNIT 005, T1			
FPS-408	Glass	Glass	Alcohol	Bottle glass		Olive	Fragment	OLIVE GLASS FRAGMENT	UNIT 005, T1			

<i>DBID</i>	<i>Category</i>	<i>Material</i>	<i>Function</i>	<i>Sub-function</i>	<i>Shape</i>	<i>Colour</i>	<i>Completeness</i>	<i>Description</i>	<i>Location</i>	<i>Inscription</i>	<i>Earliest and Latest Dates</i>	<i>Notes</i>
FPS-409	Glass	Glass	Alcohol	Bottle glass		Olive	Fragment	OLIVE GLASS FRAGMENT	UNIT 005, T1			
FPS-410	Glass	Glass	Alcohol	Bottle glass		Olive	Fragment	OLIVE GLASS FRAGMENT	UNIT 005, T1			
FPS-411	Glass	Glass	Alcohol	Bottle glass		Olive	Fragment	OLIVE GLASS FRAGMENT	UNIT 005, T1			
FPS-412	Glass	Glass	Alcohol	Bottle glass		Olive	Fragment	OLIVE GLASS FRAGMENT	UNIT 005, T1			
FPS-413	Glass	Glass	Alcohol	Bottle glass		Olive	Fragment	OLIVE GLASS FRAGMENT	UNIT 005, T1			
FPS-414	Glass	Glass	Alcohol	Bottle glass		Olive	Fragment	OLIVE GLASS FRAGMENT	UNIT 005, T1			
FPS-415	Glass	Glass	Alcohol	Bottle glass		Olive	Fragment	OLIVE GLASS FRAGMENT	UNIT 005, T1			
FPS-416	Glass	Glass	Alcohol	Bottle glass		Olive	Fragment	OLIVE GLASS FRAGMENT	UNIT 005, T1			
FPS-417	Glass	Glass	Alcohol	Bottle glass		Olive	Fragment	OLIVE GLASS FRAGMENT	UNIT 005, T1			
FPS-418	Glass	Glass	Alcohol	Bottle glass		Olive	Fragment	OLIVE GLASS FRAGMENT	UNIT 005, T1			



<i>DBID</i>	<i>Category</i>	<i>Material</i>	<i>Function</i>	<i>Sub-function</i>	<i>Shape</i>	<i>Colour</i>	<i>Completeness</i>	<i>Description</i>	<i>Location</i>	<i>Inscription</i>	<i>Earliest and Latest Dates</i>	<i>Notes</i>
FPS-419	Glass	Glass	Alcohol	Bottle glass		Olive	Fragment	OLIVE GLASS FRAGMENT	UNIT 005, T1			
FPS-420	Glass	Glass	Alcohol	Bottle glass		Olive	Fragment	OLIVE GLASS FRAGMENT	UNIT 005, T1			
FPS-421	Glass	Glass	Alcohol	Bottle glass		Olive	Fragment	OLIVE GLASS FRAGMENT ENTIRELY OXIDISED SO APPEARS WHITE	UNIT 005, T1			
FPS-422	Glass	Glass	Alcohol	Bottle glass		Olive	Fragment	OLIVE GLASS FRAGMENT	UNIT 005, T1			
FPS-423	Glass	Glass	Alcohol	Bottle glass		Olive	Fragment	OLIVE GLASS FRAGMENT	UNIT 005, T1			
FPS-424	Glass	Glass	Alcohol	Bottle glass		Olive	Fragment	OLIVE GLASS FRAGMENT	UNIT 005, T1			
FPS-425	Glass	Glass	Alcohol	Bottle glass		Olive	Fragment	OLIVE GLASS FRAGMENT	UNIT 005, T1			
FPS-426	Glass	Glass	Alcohol	Bottle glass		Olive	Fragment	OLIVE GLASS FRAGMENT	UNIT 005, T1			
FPS-427	Glass	Glass	Alcohol	Bottle glass		Olive	Fragment	OLIVE GLASS FRAGMENT	UNIT 005, T1			

<i>DBID</i>	<i>Category</i>	<i>Material</i>	<i>Function</i>	<i>Sub-function</i>	<i>Shape</i>	<i>Colour</i>	<i>Completeness</i>	<i>Description</i>	<i>Location</i>	<i>Inscription</i>	<i>Earliest and Latest Dates</i>	<i>Notes</i>
FPS-428	Glass	Glass	Alcohol	Bottle glass		Olive	Fragment	OLIVE GLASS FRAGMENT	UNIT 005, T1			
FPS-429	Glass	Glass	Alcohol	Bottle glass		Olive	Fragment	OLIVE GLASS FRAGMENT	UNIT 005, T1			
FPS-430	Glass	Glass	Alcohol	Bottle glass		Olive	Fragment	OLIVE GLASS FRAGMENT	UNIT 005, T1			
FPS-431	Glass	Glass	Alcohol	Bottle glass		Olive	Fragment	OLIVE GLASS FRAGMENT	UNIT 005, T1			
FPS-432	Glass	Glass	Alcohol	Bottle glass		Olive	Fragment	OLIVE GLASS FRAGMENT	UNIT 005, T1			
FPS-433	Glass	Glass	Alcohol	Bottle glass		Amber	Fragment	BOTTLE BASE WITH STIPLING	UNIT 005, T1		1940-present	
FPS-434	Glass	Glass	Alcohol	Bottle glass		Amber	Fragment	BOTTLE GLASS FRAGMENT	UNIT 005, T1			
FPS-435	Glass	Glass	Alcohol	Bottle glass		Amber	Fragment	BOTTLE GLASS FRAGMENT	UNIT 005, T1			
FPS-436	Glass	Glass	Alcohol	Bottle glass		Amber	Fragment	BOTTLE GLASS FRAGMENT	UNIT 005, T1			
FPS-437	Glass	Glass	Alcohol	Bottle glass		Amber	Fragment	BOTTLE GLASS FRAGMENT	UNIT 005, T1			

<i>DBID</i>	<i>Category</i>	<i>Material</i>	<i>Function</i>	<i>Sub-function</i>	<i>Shape</i>	<i>Colour</i>	<i>Completeness</i>	<i>Description</i>	<i>Location</i>	<i>Inscription</i>	<i>Earliest and Latest Dates</i>	<i>Notes</i>
FPS-438	Glass	Glass	Alcohol	Bottle glass		Amber	Fragment	BOTTLE GLASS FRAGMENT	UNIT 005, T1			
FPS-439	Glass	Glass	Alcohol	Bottle glass		Amber	Fragment	BOTTLE GLASS FRAGMENT	UNIT 005, T1			
FPS-440	Glass	Glass	Alcohol	Bottle glass		Amber	Fragment	BOTTLE GLASS FRAGMENT	UNIT 005, T1			
FPS-441	Glass	Glass	Alcohol	Bottle glass		Amber	Fragment	BOTTLE GLASS FRAGMENT	UNIT 005, T1			
FPS-442	Glass	Glass	Alcohol	Bottle glass		Amber	Fragment	BOTTLE GLASS FRAGMENT	UNIT 005, T1			
FPS-443	Glass	Glass	Alcohol	Bottle glass		Amber	Fragment	BOTTLE GLASS FRAGMENT	UNIT 005, T1			
FPS-444	Glass	Glass	Unknown	Bottle glass		Clear	Fragment	CLEAR GLASS OXIDISED	UNIT 005, T1			
FPS-445	Glass	Glass	Unknown	Bottle glass		Clear	Fragment	CLEAR GLASS OXIDISED	UNIT 005, T1			
FPS-446	Glass	Glass	Unknown	Bottle glass		Clear	Fragment	CLEAR GLASS OXIDISED	UNIT 005, T1			
FPS-447	Glass	Glass	Unknown	Bottle glass		Clear	Fragment	CLEAR GLASS OXIDISED	UNIT 005, T1			

<i>DBID</i>	<i>Category</i>	<i>Material</i>	<i>Function</i>	<i>Sub-function</i>	<i>Shape</i>	<i>Colour</i>	<i>Completeness</i>	<i>Description</i>	<i>Location</i>	<i>Inscription</i>	<i>Earliest and Latest Dates</i>	<i>Notes</i>
FPS-447	Metal	FE	Unknown	Unknown			Fragment	CORRODED METAL FRAGMENT	UNIT 005, T1			
FPS-448	Glass	Glass	Unknown	Bottle glass	Cylinder	Clear	Fragment	CYLINDRICAL BOTTLE WITH SEAM	UNIT 005, T1			
FPS-448	Metal	FE	Unknown	Unknown			Fragment	CORRODED METAL FRAGMENT	UNIT 005, T1			
FPS-449	Glass	Glass	Unknown	Bottle glass		Clear	Fragment	SQUARE BOTTLE BASE	UNIT 005, T1			
FPS-449	Metal	FE	Unknown	Unknown			Fragment	CORRODED METAL FRAGMENT	UNIT 005, T1			
FPS-450	Glass	Glass	Unknown	Bottle glass		Clear	Fragment	FLATTENED OVAL BODY FRAGMENT	UNIT 005, T1			
FPS-450	Metal	FE	Unknown	Unknown			Fragment	CORRODED METAL FRAGMENT	UNIT 005, T1			
FPS-451	Glass	Glass	Unknown	Bottle glass		Clear	Fragment	BODY AND NECK FRAGMENT	UNIT 005, T1			
FPS-452	Glass	Glass	Unknown	Bottle glass		Clear	Fragment	NECK FRAGMENT	UNIT 005, T1			
FPS-452	Structural	Mortar	Building	Adhesive			Fragment	MORTAR SAMPLE	UNIT 005, T1			

<i>DBID</i>	<i>Category</i>	<i>Material</i>	<i>Function</i>	<i>Sub-function</i>	<i>Shape</i>	<i>Colour</i>	<i>Completeness</i>	<i>Description</i>	<i>Location</i>	<i>Inscription</i>	<i>Earliest and Latest Dates</i>	<i>Notes</i>
FPS-453	Glass	Glass	Unknown	Bottle glass		Clear	Fragment	BOTTLE FRAGMENT	UNIT 005, T1			
FPS-454	Glass	Glass	Unknown	Bottle glass		Clear	Fragment	BOTTLE FRAGMENT	UNIT 005, T1			
FPS-455	Glass	Glass	Unknown	Bottle glass		Clear	Fragment	BOTTLE FRAGMENT	UNIT 005, T1			
FPS-455	Wood	Charcoal		Unknown		Black	Fragment	CHARCOAL FRAGMENT	UNIT 005, T1			
FPS-456	Glass	Glass	Unknown	Bottle glass		Clear	Fragment	BOTTLE FRAGMENT	UNIT 005, T1			
FPS-457	Glass	Glass	Unknown	Bottle glass		Clear	Fragment	BOTTLE FRAGMENT	UNIT 005, T1			
FPS-458	Glass	Glass	Unknown	Bottle glass		Clear	Fragment	BOTTLE FRAGMENT	UNIT 005, T1			
FPS-459	Glass	Glass	Unknown	Bottle glass		Clear	Fragment	BOTTLE FRAGMENT	UNIT 005, T1			
FPS-460	Glass	Glass	Unknown	Bottle glass		Clear	Fragment	BOTTLE FRAGMENT	UNIT 005, T1			
FPS-461	Glass	Glass	Unknown	Bottle glass		Clear	Fragment	BOTTLE FRAGMENT	UNIT 005, T1			
FPS-462	Glass	Glass	Unknown	Bottle glass		Clear	Fragment	BOTTLE FRAGMENT	UNIT 005, T1			

<i>DBID</i>	<i>Category</i>	<i>Material</i>	<i>Function</i>	<i>Sub-function</i>	<i>Shape</i>	<i>Colour</i>	<i>Completeness</i>	<i>Description</i>	<i>Location</i>	<i>Inscription</i>	<i>Earliest and Latest Dates</i>	<i>Notes</i>
FPS-462	Structural	Mortar	Floor surface	Unknown		White	Fragment	LIMESTONE FLOOR SURFACE FOR STABLE INTERIOR	INIT 102, T2			
FPS-463	Glass	Glass	Unknown	Bottle glass		Clear	Fragment	BOTTLE FRAGMENT	UNIT 005, T1			
FPS-463	Structural	Mortar	Floor surface	Unknown		White	Fragment	LIMESTONE FLOOR SURFACE FOR STABLE INTERIOR	INIT 102, T2			
FPS-464	Glass	Glass	Unknown	Bottle glass		Clear	Fragment	BOTTLE FRAGMENT	UNIT 005, T1			
FPS-464	Structural	Mortar	Floor surface	Unknown		White	Fragment	LIMESTONE FLOOR SURFACE FOR STABLE INTERIOR	INIT 102, T2			
FPS-465	Glass	Glass	Unknown	Bottle glass		Clear	Fragment	BOTTLE FRAGMENT	UNIT 005, T1			
FPS-466	Glass	Glass	Unknown	Bottle glass		Clear	Fragment	BOTTLE FRAGMENT	UNIT 005, T1			
FPS-467	Glass	Glass	Unknown	Bottle glass		Clear	Fragment	BOTTLE FRAGMENT	UNIT 005, T1			

<i>DBID</i>	<i>Category</i>	<i>Material</i>	<i>Function</i>	<i>Sub-function</i>	<i>Shape</i>	<i>Colour</i>	<i>Completeness</i>	<i>Description</i>	<i>Location</i>	<i>Inscription</i>	<i>Earliest and Latest Dates</i>	<i>Notes</i>
FPS-468	Glass	Glass	Unknown	Bottle glass		Clear	Fragment	BOTTLE FRAGMENT	UNIT 005, T1			
FPS-469	Glass	Glass	Unknown	Bottle glass		Clear	Fragment	BOTTLE FRAGMENT	UNIT 005, T1			
FPS-470	Glass	Glass	Unknown	Bottle glass		Clear	Fragment	BOTTLE FRAGMENT	UNIT 005, T1			
FPS-471	Glass	Glass	Unknown	Bottle glass		Clear	Fragment	BOTTLE FRAGMENT	UNIT 005, T1			
FPS-472	Glass	Glass	Unknown	Bottle glass		Clear	Fragment	BOTTLE FRAGMENT	UNIT 005, T1			
FPS-473	Glass	Glass	Unknown	Bottle glass		Clear	Fragment	BOTTLE FRAGMENT	UNIT 005, T1			
FPS-474	Glass	Glass	Unknown	Bottle glass		Clear	Fragment	BOTTLE FRAGMENT	UNIT 005, T1			
FPS-475	Glass	Glass	Unknown	Bottle glass		Clear	Fragment	BOTTLE FRAGMENT	UNIT 005, T1			
FPS-476	Glass	Glass	Unknown	Bottle glass		Clear	Fragment	BOTTLE FRAGMENT	UNIT 005, T1			
FPS-477	Glass	Glass	Unknown	Bottle glass		Clear	Fragment	BOTTLE FRAGMENT	UNIT 005, T1			
FPS-478	Glass	Glass	Unknown	Bottle glass		Clear	Fragment	BOTTLE FRAGMENT	UNIT 005, T1			

<i>DBID</i>	<i>Category</i>	<i>Material</i>	<i>Function</i>	<i>Sub-function</i>	<i>Shape</i>	<i>Colour</i>	<i>Completeness</i>	<i>Description</i>	<i>Location</i>	<i>Inscription</i>	<i>Earliest and Latest Dates</i>	<i>Notes</i>
FPS-479	Glass	Glass	Unknown	Bottle glass		Clear	Fragment	BOTTLE FRAGMENT	UNIT 005, T1			
FPS-480	Glass	Glass	Unknown	Bottle glass		Clear	Fragment	BOTTLE FRAGMENT	UNIT 005, T1			
FPS-481	Glass	Glass	Unknown	Bottle glass		Clear	Fragment	BOTTLE FRAGMENT	UNIT 005, T1			
FPS-482	Glass	Glass	Unknown	Bottle glass		Clear	Fragment	BOTTLE FRAGMENT	UNIT 005, T1			
FPS-483	Glass	Glass	Unknown	Bottle glass		Clear	Fragment	BOTTLE FRAGMENT	UNIT 005, T1			
FPS-484	Glass	Glass	Unknown	Bottle glass		Clear	Fragment	BOTTLE FRAGMENT	UNIT 005, T1			
FPS-485	Glass	Glass	Unknown	Bottle glass		Clear	Fragment	BOTTLE FRAGMENT	UNIT 005, T1			
FPS-486	Glass	Glass	Unknown	Bottle glass		Clear	Fragment	BOTTLE FRAGMENT	UNIT 005, T1			
FPS-487	Glass	Glass	Unknown	Bottle glass		Clear	Fragment	BOTTLE FRAGMENT	UNIT 005, T1			
FPS-488	Glass	Glass	Unknown	Bottle glass		Clear	Fragment	BOTTLE FRAGMENT	UNIT 005, T1			
FPS-489	Glass	Glass	Unknown	Bottle glass		Clear	Fragment	BOTTLE FRAGMENT	UNIT 005, T1			



<i>DBID</i>	<i>Category</i>	<i>Material</i>	<i>Function</i>	<i>Sub-function</i>	<i>Shape</i>	<i>Colour</i>	<i>Completeness</i>	<i>Description</i>	<i>Location</i>	<i>Inscription</i>	<i>Earliest and Latest Dates</i>	<i>Notes</i>
FPS-490	Glass	Glass	Unknown	Bottle glass		Clear	Fragment	BOTTLE FRAGMENT	UNIT 005, T1			
FPS-491	Glass	Glass	Unknown	Bottle glass		Clear	Fragment	BOTTLE FRAGMENT	UNIT 005, T1			
FPS-492	Glass	Glass	Unknown	Bottle glass		Clear	Fragment	BOTTLE FRAGMENT	UNIT 005, T1			
FPS-493	Glass	Glass	Unknown	Bottle glass		Clear	Fragment	BOTTLE FRAGMENT	UNIT 005, T1			
FPS-494	Glass	Glass	Unknown	Bottle glass		Clear	Fragment	BOTTLE FRAGMENT	UNIT 005, T1			
FPS-495	Glass	Glass	Unknown	Bottle glass		Clear	Fragment	BOTTLE FRAGMENT	UNIT 005, T1			
FPS-496	Glass	Glass	Unknown	Bottle glass		Clear	Fragment	BOTTLE FRAGMENT	UNIT 005, T1			
FPS-497	Glass	Glass	Unknown	Bottle glass		Clear	Fragment	BOTTLE FRAGMENT	UNIT 005, T1			
FPS-539	Ceramic	Porcelain		Unknown		Green	Sherd	SMALL SHERD, GREEN WASH GLAZE	UNIT 005, T1			
FPS-540	Ceramic	Porcelain		Unknown		White	Sherd	SMALL BASE SHERD	UNIT 005, T1			

<i>DBID</i>	<i>Category</i>	<i>Material</i>	<i>Function</i>	<i>Sub-function</i>	<i>Shape</i>	<i>Colour</i>	<i>Completeness</i>	<i>Description</i>	<i>Location</i>	<i>Inscription</i>	<i>Earliest and Latest Dates</i>	<i>Notes</i>
FPS-541	Ceramic	Earthenware		Unknown		White	Sherd	SMALL SHERD	UNIT 005, T1			
FPS-542	Metal	AL	Food	Milk bottle cap		Silver	Complete	MILK BOTTLE TOP	UNIT 005, T1			
FPS-498	Glass	Glass	Unknown	Bottle glass		Clear	Fragment	BOTTLE FRAGMENT	UNIT 005, T1			
FPS-545	Metal	FE	Hardware	Nail			Complete	WIRE NAIL STEEL RHOMBOID, 2 BRACKETS	UNIT 005, T1		1895-1899	
FPS-546	Metal	FE	Hardware	Nail			Complete	WIRE NAIL STEEL RHOMBOID, 2 BRACKETS	UNIT 005, T1		1895-1899	
FPS-499	Glass	Glass	Unknown	Bottle glass		Clear	Fragment	BOTTLE FRAGMENT	UNIT 005, T1			
FPS-500	Glass	Glass	Unknown	Bottle glass		Clear	Fragment	BOTTLE FRAGMENT	UNIT 005, T1			
FPS-451	Metal	SN	Food	Tin can	Cylinder		Incomplete	HEAVILY CORRODED LARGE TIN CAN, LARGELY INTACT	UNIT 005, T1			

<i>DBID</i>	<i>Category</i>	<i>Material</i>	<i>Function</i>	<i>Sub-function</i>	<i>Shape</i>	<i>Colour</i>	<i>Completeness</i>	<i>Description</i>	<i>Location</i>	<i>Inscription</i>	<i>Earliest and Latest Dates</i>	<i>Notes</i>
FPS-453	Ceramic	Stoneware	Unknown	Unknown		White	Sherd	STONEWARE SHERD	UNIT 005, T1			
FPS-454	Sample	Deposit	Bulk	Unknown				BULK SAMPLE OF 005 MIXED DEPOSIT	UNIT 005, T1			
FPS-501	Glass	Glass	Unknown	Bottle glass		Clear	Fragment	BOTTLE FRAGMENT	UNIT 005, T1			
FPS-456	Sample	Deposit	Bulk	Unknown				BULK SAMPLE OF 010 DEPOSIT	UNIT 010 T1			
FPS-457	Sample	Wood		Unknown				SMALL SAMPLE UNIT 003	UNIT 003, T1			
FPS-458	Wood	Wood	Structural	Trellis joist			Complete	COMPLETE TIMBER JOIST FROM TRELIS ADJACENT TO REAR WALL OF STABLES, UNIT 004, NAILS INTACT. VERY FRAGILE	UNIT 004, T1			

<i>DBID</i>	<i>Category</i>	<i>Material</i>	<i>Function</i>	<i>Sub-function</i>	<i>Shape</i>	<i>Colour</i>	<i>Completeness</i>	<i>Description</i>	<i>Location</i>	<i>Inscription</i>	<i>Earliest and Latest Dates</i>	<i>Notes</i>
FPS-459	Wood	Wood	Structural	Trellis joist			Complete	COMPLETE TIMBER JOIST FROM TRELIS ADJACENT TO REAR WALL OF STABLES, UNIT 004, NAILS INTACT. VERY FRAGILE	UNIT 004, T1			

<i>DBID</i>	<i>Category</i>	<i>Material</i>	<i>Function</i>	<i>Sub-function</i>	<i>Shape</i>	<i>Colour</i>	<i>Completeness</i>	<i>Description</i>	<i>Location</i>	<i>Inscription</i>	<i>Earliest and Latest Dates</i>	<i>Notes</i>
FPS-460	Wood	Wood	Structural	Trellis joist			Incomplete	COMPLETE TIMBER JOIST FROM TRELLIS ADJACENT TO REAR WALL OF STABLES, UNIT 004, NAILS INTACT. VERY FRAGILE, VERY UNSTABLE AND DISINTEGRATING	UNIT 004, T1			
FPS-461	Sample	Deposit	Bulk	Unknown				DISINTEGRATED TIMBER FROM UNIT 004 IN 005 BULK	UNIT 004, T1			
FPS-502	Glass	Glass	Unknown	Bottle glass		Clear	Fragment	BOTTLE FRAGMENT	UNIT 005, T1			
FPS-503	Glass	Glass	Unknown	Bottle glass		Clear	Fragment	BOTTLE FRAGMENT	UNIT 005, T1			

<i>DBID</i>	<i>Category</i>	<i>Material</i>	<i>Function</i>	<i>Sub-function</i>	<i>Shape</i>	<i>Colour</i>	<i>Completeness</i>	<i>Description</i>	<i>Location</i>	<i>Inscription</i>	<i>Earliest and Latest Dates</i>	<i>Notes</i>
FPS-504	Glass	Glass	Unknown	Bottle glass		Clear	Fragment	BOTTLE FRAGMENT	UNIT 005, T1			
FPS-505	Glass	Glass	Unknown	Bottle glass		Clear	Fragment	BOTTLE FRAGMENT	UNIT 005, T1			
FPS-506	Glass	Glass	Unknown	Bottle glass		Clear	Fragment	BOTTLE FRAGMENT	UNIT 005, T1			
FPS-507	Glass	Glass	Unknown	Bottle glass		Clear	Fragment	BOTTLE FRAGMENT	UNIT 005, T1			
FPS-508	Glass	Glass	Unknown	Bottle glass		Clear	Fragment	BOTTLE FRAGMENT	UNIT 005, T1			
FPS-509	Glass	Glass	Unknown	Bottle glass		Clear	Fragment	BOTTLE FRAGMENT	UNIT 005, T1			
FPS-510	Glass	Glass	Unknown	Bottle glass		Clear	Fragment	BOTTLE FRAGMENT	UNIT 005, T1			
FPS-511	Glass	Glass	Unknown	Bottle glass		Clear	Fragment	BOTTLE FRAGMENT	UNIT 005, T1			
FPS-512	Structural	Brick	Building	Unknown		Orange	Fragment	BRICK FRAGMENT, NO DIAGNOSTICS	UNIT 005, T1			

<i>DBID</i>	<i>Category</i>	<i>Material</i>	<i>Function</i>	<i>Sub-function</i>	<i>Shape</i>	<i>Colour</i>	<i>Completeness</i>	<i>Description</i>	<i>Location</i>	<i>Inscription</i>	<i>Earliest and Latest Dates</i>	<i>Notes</i>
FPS-513	Structural	Brick	Building	Unknown		Purple	Fragment	BRICK FRAGMENT, NO DIAGNOSTICS	UNIT 005, T1			
FPS-514	Structural	Brick	Building	Unknown		Purple	Fragment	BRICK FRAGMENT, NO DIAGNOSTICS	UNIT 005, T1			
FPS-515	Structural	Brick	Building	Unknown		Orange	Fragment	BRICK FRAGMENT, NO DIAGNOSTICS	UNIT 005, T1			
FPS-516	Structural	Brick	Building	Unknown		Orange	Fragment	BRICK FRAGMENT, NO DIAGNOSTICS	UNIT 005, T1			
FPS-517	Structural	Brick	Building	Unknown		Orange	Fragment	BRICK FRAGMENT, NO DIAGNOSTICS	UNIT 005, T1			
FPS-518	Structural	Brick	Building	Unknown		Orange	Fragment	BRICK FRAGMENT, NO DIAGNOSTICS	UNIT 005, T1			

<i>DBID</i>	<i>Category</i>	<i>Material</i>	<i>Function</i>	<i>Sub-function</i>	<i>Shape</i>	<i>Colour</i>	<i>Completeness</i>	<i>Description</i>	<i>Location</i>	<i>Inscription</i>	<i>Earliest and Latest Dates</i>	<i>Notes</i>
FPS-519	Structural	Brick	Building	Unknown		Orange	Fragment	BRICK FRAGMENT, NO DIAGNOSTICS	UNIT 005, T1			
FPS-520	Structural	Brick	Building	Unknown		Orange	Fragment	BRICK FRAGMENT, NO DIAGNOSTICS	UNIT 005, T1			
FPS-521	Structural	Brick	Building	Unknown		Orange	Fragment	BRICK FRAGMENT, NO DIAGNOSTICS	UNIT 005, T1			
FPS-522	Structural	Brick	Building	Unknown		Orange	Fragment	BRICK FRAGMENT, NO DIAGNOSTICS	UNIT 005, T1			
FPS-523	Structural	Brick	Building	Unknown		Orange	Fragment	BRICK FRAGMENT, NO DIAGNOSTICS	UNIT 005, T1			
FPS-524	Structural	Brick	Building	Unknown		Orange	Fragment	BRICK FRAGMENT, NO DIAGNOSTICS	UNIT 005, T1			



<i>DBID</i>	<i>Category</i>	<i>Material</i>	<i>Function</i>	<i>Sub-function</i>	<i>Shape</i>	<i>Colour</i>	<i>Completeness</i>	<i>Description</i>	<i>Location</i>	<i>Inscription</i>	<i>Earliest and Latest Dates</i>	<i>Notes</i>
FPS-525	Structural	Brick	Building	Unknown		Orange	Fragment	BRICK FRAGMENT W/ MORTAR ATTACHED	UNIT 005, T1			
FPS-526	Structural	Brick	Building	Unknown		Orange	Fragment	SMALL BRICK FRAG, SMOOTH FINISH	UNIT 005, T1			
FPS-527	Structural	Brick	Building	Unknown		Orange	Fragment	SMALL BRICK FRAG, SMOOTH FINISH	UNIT 005, T1			
FPS-528	Structural	Bakelite	Surface	Road?		Black	Fragment	ASPHALT FRAGMENT, MOSTLY BLUS METAL CONGLOMERATE, WITH GRAVEL ON BASE	UNIT 005, T1			

<i>DBID</i>	<i>Category</i>	<i>Material</i>	<i>Function</i>	<i>Sub-function</i>	<i>Shape</i>	<i>Colour</i>	<i>Completeness</i>	<i>Description</i>	<i>Location</i>	<i>Inscription</i>	<i>Earliest and Latest Dates</i>	<i>Notes</i>
FPS-529	Structural	Asphalt	Surface	Road?		Grey	Fragment	ASPHALT FRAGMENT, HIGH GRAVEL CONTENT ALONGSIDE BLUE METAL	UNIT 005, T1			
FPS-530	Structural	Cement	Surface	Unknown		White	Fragment	LARGE CEMENT SURFACE FRAGMENT	UNIT 005, T1			
FPS-531	Structural	Mortar	Adhesive	Unknown		White	Fragment	LUMP MORTAR	UNIT 005, T1			
FPS-532	Fuel	Coal		Unknown		Black	Fragment	SMALL COAL FRAGMENT	UNIT 005, T1			
FPS-533	Structural	Blue Metal		Unknown		Grey	Fragment	BLUE METAL PIECE	UNIT 005, T1			
FPS-534	Structural	Blue Metal		Unknown		Grey	Fragment	BLUE METAL PIECE	UNIT 005, T1			
FPS-535	Structural	Limestone		Unknown		Yellow	Fragment	LIMESTONE FRAG	UNIT 005, T1			
FPS-536	Structural	Limestone		Unknown		Yellow	Fragment	LIMESTONE FRAG	UNIT 005, T1			
FPS-537	Structural	Cement		Unknown		Grey	Fragment	CEMENT FRAGMENT	UNIT 005, T1			

<i>DBID</i>	<i>Category</i>	<i>Material</i>	<i>Function</i>	<i>Sub-function</i>	<i>Shape</i>	<i>Colour</i>	<i>Completeness</i>	<i>Description</i>	<i>Location</i>	<i>Inscription</i>	<i>Earliest and Latest Dates</i>	<i>Notes</i>
FPS-538	Structural	Cement		Unknown		Grey	Fragment	CEMENT FRAGMENT	UNIT 005, T1			
FPS-543	Glass	Glass	Unknown	Bottle glass		Clear	Fragment	FRAGMENT BOTTLE GLASS	UNIT 005, T1			
FPS-544	Glass	Glass	Unknown	Bottle glass		Clear	Fragment	FRAGMENT BOTTLE GLASS	UNIT 005, T1			